



Hammerhead

71.910.05

**Hammerhead 2 Stage Hydraulic
Transmission Jack 500KG**



**Jimmy Industrial Pty Ltd
5 Cord St
Dudley Park, 5008
Ph: (08) 8269 9700
W: www.jimmytools.com.au
E: sales@jimmytools.com.au**



Read this entire manual carefully and completely before installation or operation of the lift

1. Forward

This jack is a removal hydraulic one that with the following advantage compact construction:light in weight,long lift range,fast in lift,replaceable in connection part,firmly and reliable in connection of ADT and so on.

It can be used when assembling and disassembling the removal parts and structural parts which need to be lifted,descended transported. It is the ideal tool for assembling and repairing in motor repair shop,mobile shop.

2. Main specifications

Rated load(kg)	Min height of saddle (mm)	Max height of saddle (mm)	Net weight(kg)	Dimensions(mm)
500	855	1760	52	530*230*800

3. Safety instructions

WARNING! Ensure all preliminary checks are carefully carried out before use of jack.

Ensure use of genuine parts only. Non authorised parts may be dangerous and will invalidate the warranty.

WARNING! Use jack on level and solid ground. Ensure the floor over which the jack will be transported is swept clean.

DANGER! DO NOT use on tarmacadam, or any other soft surface as jack may sink or topple.

DANGER! If jack tips or leans STOP WHAT YOUR ARE DOING. MOVE QUICKLY TO A SAFE DISTANCE.

- Use jack in an adequate working area for its function, keep area clean & tidy and free from unrelated materials. Ensure there is adequate lighting.
- Before use ensure the gearbox weight and size does not exceed the capacity of the jack.
- Ensure the vehicle is raised and stabilised at the correct height before attempting to move the jack under the vehicle.
- Keep all unauthorised persons away from the jack during lifting and lowering and when in transit.
- Maintain correct balance and footing. Ensure the floor is not slippery and wear non slip shoes.
- Remove ill fitting clothing. Remove ties, watches, rings, and other loose jewellery, and contain and/or tie back long hair.

WARNING! Ensure load is placed level and centrally on jack saddle and load is fixed in place before attempting to lift, lower, or transport.

- The lowering speed will vary according to the weight of the load and the release valve setting.
- Ensure the jack saddle is fully lowered and is clean, dry, and oil free before attempting to move the jack with or without a load.
- Diligence is required in ensuring that you continually monitor any operation until completed.

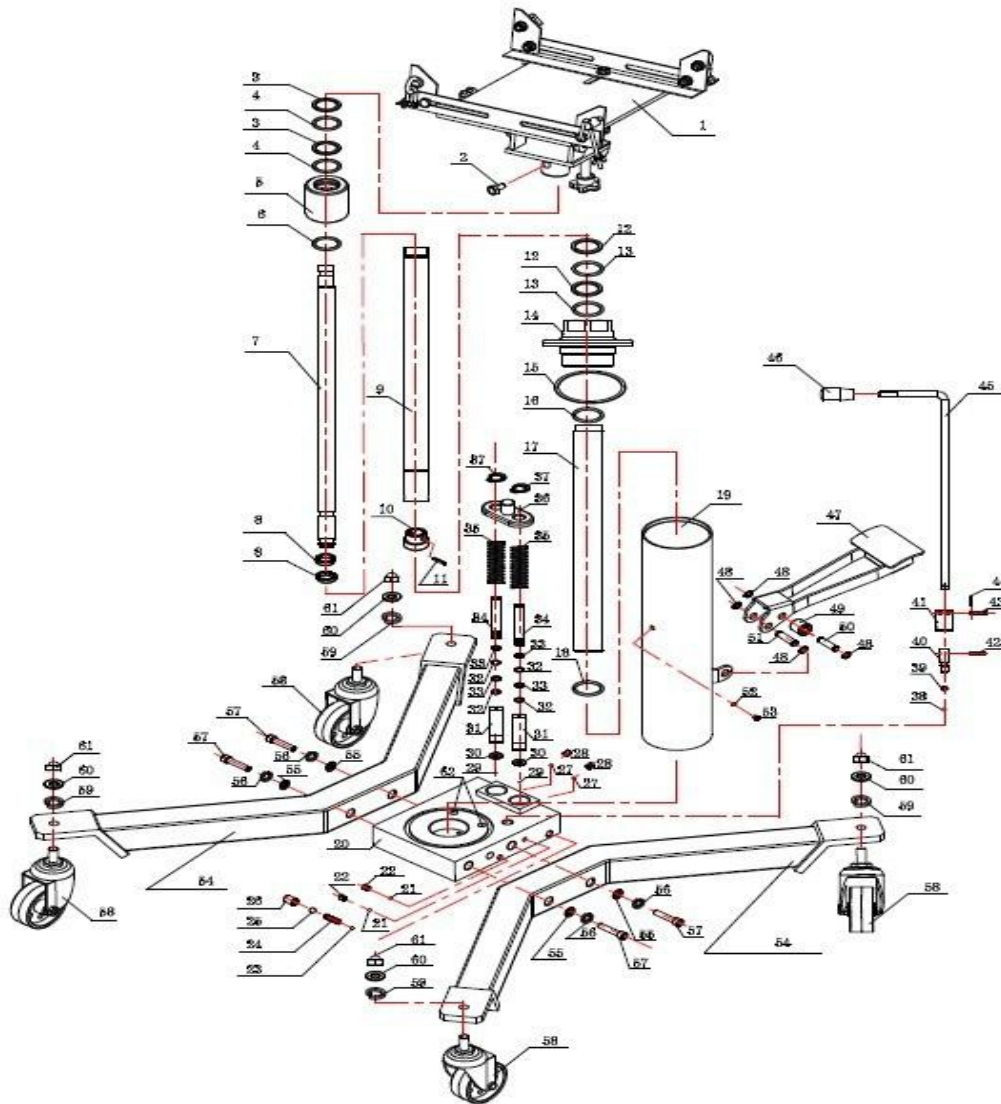
WARNING! DO NOT operate jack if any parts are damaged or missing.

- DO NOT exceed the rated capacity of the jack.
- DO NOT allow untrained persons to operate the jack.
- DO NOT place any part of your body within or under the jack during use.
- DO NOT raise or lower vehicle lifting platform whilst the transmission jack is being used.
- DO NOT transport the jack, with or without a load, with the saddle in the raised position.
- DO NOT get jack wet or use in damp or wet locations or areas where there is condensation.

- DO NOT operate the jack when you are tired, under the influence of alcohol, drugs and so on.
- DO NOT lift or support vehicles with jack and do not use jack as a load sustaining device.
- DO NOT use jack for any purpose other than removal, transportation, installation of transmissions.
- DO NOT move jack without suitable restraint on the load.
- DO NOT make any modifications to the jack, and DO NOT adjust or tamper with safety valve.
- DO NOT remove any labels from the jack. If labels are damaged or unclear replace them.
- DO NOT use brake fluid to top up hydraulic unit. Use Sealey hydraulic oil only.
- Use a qualified person to lubricate and maintain the jack.
- Before storing in safe area, ensure all parts are clean, free of grease and oil (especially saddle).
- Lower saddle to the lowest position.

4. Main construction

PART NO	DESCRIPTION	QTY	PART NO	DESCRIPTION	QTY
1	Upper unit	1	32	O-Ring	2
2	Screw	1	33	Nylon cotter washer	2
3	Nylon cotter washer	2	34	Pump core	2
4	O-Ring	2	35	Foot pedal spring	2
5	Small top cap	1	36	Foot pedal spring washer	1
6	O-Ring	1	37	retainer ring	2
7	piston rod	1	38	Steel ball	1
8	piston ring	2	39	O-Ring	1
9	Small top cap	1	40	oil return valve	1
10	Middle cylinder	1	41	oil return valve coat	1
11	piston	1	42	round pin	1
12	Nylon cotter washer	2	43	round pin	1
13	O-Ring	2	44	Cotter pin	1
14	Big top cap	1	45	Oil return handle	1
15	Nylon washer	1	46	Oil return handle coat	1
16	O-Ring	1	47	Foot pedal	1
17	Cylinder	1	48	retainer ring	4
18	Cylinder washer	1	49	roller wheel	1
19	Coat	1	50	roller wheel pin	1
20	Base	1	51	pinned shan	1
21	Steel ball	2	52	O-Ring	1
22	Steel oil screw	2	53	Screw	1
23	Steel ball	2	54	bottom studs	2
24	Spring	1	55	Washer	4
25	Steel ball	1	56	Spring washer	4
26	Seal oil screw	1	57	Screw	4
27	Steel ball	2	58	Caster Wheel	4
28	Seal oil screw	2	59	Spring washer	4
29	Steel ball	2	60	Washer	4
30	Pump washer	2	61	Round nut	4
31	Pump body	2	62	dust ring	2



5. Operation instruction

WARNING! Before use ensure you have read, understood and apply Section 3 safety instructions.

5.1. POSITIONING JACK BENEATH LOAD.

5.2. LOWERING THE LOAD.

5.3. TRANSPORTING THE LOAD.

5.4. RE-INSTALLING A GEARBOX.

6. Maintenance

IMPORTANT: Only fully qualified personnel should attempt maintenance or repair.

6.1. When the jack is not in use, the saddle must be in the lowest position to minimise ram and piston corrosion.

6.2. Keep the jack clean and wipe off any oil or grease. Lubricate all moving parts with acid free oil.

6.3. The oil cylinder is a sealed unit and must not be accessed. For service contact your authorised dealer.

WARNING! Only a good quality Jack oil must be used, DO NOT use brake fluid.

6.4. Before each use, follow the pre-check list to ensure components are in good working order. If any suspect item is found remove jack from service and take necessary action to remedy the problem.

DO NOT use the jack if you believe it has been subjected to an abnormal load or shock. If in doubt contact your local service agent.

6.5. Periodically check the pump piston and piston rod for signs of corrosion. Clean exposed areas with a clean oiled cloth.