

71.045.4PR-LIFT

THE LIFT OF JACKING BEAM INSTRUCTION & MAINTENANCE MANUAL



Jimmy Industrial Pty Ltd
5 Cord St
Dudley Park, 5008
Ph: (08) 8269 9700
W: www.jimmytools.com.au
E: sales@jimmytools.com.au



Read this entire manual carefully and completely before installation or operation of the lift

THE LIFT OF JACKING BEAM

INSTRUCTION MANUAL

INDEX	PAGE
1. Description of the machine	- 3 -
1.1. Machine Application	- 3 -
1.2. Structure Features.....	- 3 -
1.3. Basic structure.....	- 3 -
1.4. Hydraulic pump	- 3 -
1.5. Technical parameter	- 3 -
1.6. External dimension.....	- 4 -
2. Installation and use.....	- 4 -
2.1. The jacking beam installation	- 4 -
2.2. No load of machine test.....	- 5 -
2.3. Load of machine test	- 5 -
2.4. Points of attention.....	- 6 -
3. Explosion drawing	- 7 -
4. Explosion list	- 12 -

1. Description of the machine

1.1. Machine Application



PL-X20TQ pneumatic control jacking beam is fit for large platform scissor lift and four post lift, which and lift each kind of vehicle whose weight is less than 3500kg(the weight of single shaft is less than 2000kg), suitable for use in vehicle tests, maintenance, mount/demount tires, caring for automobiles and four wheel alignment

1.2. Structure Features

- Use hidden and thin scissor structure, dispense with power supply, good security.
- With hydraulic lock and mechanical dual-gear safety-claw lock double safety device. safe & reliable.
- Fit the lengthen twin-stage real-wheel sliding plate, suitable for wheel alignment of various vehicle
- Equipped with the roller, can slide along the lifting guide rail
- The wheel track of the jacking beam and the lifting arm are adjustable, suitable for various vehicles with width and length wheel track.

1.3. Basic structure

The lift of jacking beam can only use with the large platform scissor lift and four post lift manufactured by our company. If the jacking beam used in the large platform scissor lift, the foundation refer to the manual.

1.4. Hydraulic pump

Pneumatic hydraulic pump



The lift of jacking beam is designed and built to lift all kinds of vehicles, all other use are unauthorized. In particular, and not lift the vehicle whose weight exceeds the maximum weight.

1.5. Technical parameter

Machine type	PL-X20TQ
Drive	Pneumatic hydraulic
Lifting capacity	2000kg
Machine lift height	485mm
Platform initial height	215mm
Platform length	730mm
Platform width	260mm
Lifting time	Manual control
Descent time	Manual control
Whole machine length	910mm
Whole machine width	540mm
Whole machine weight	130kg

1.6. External dimension

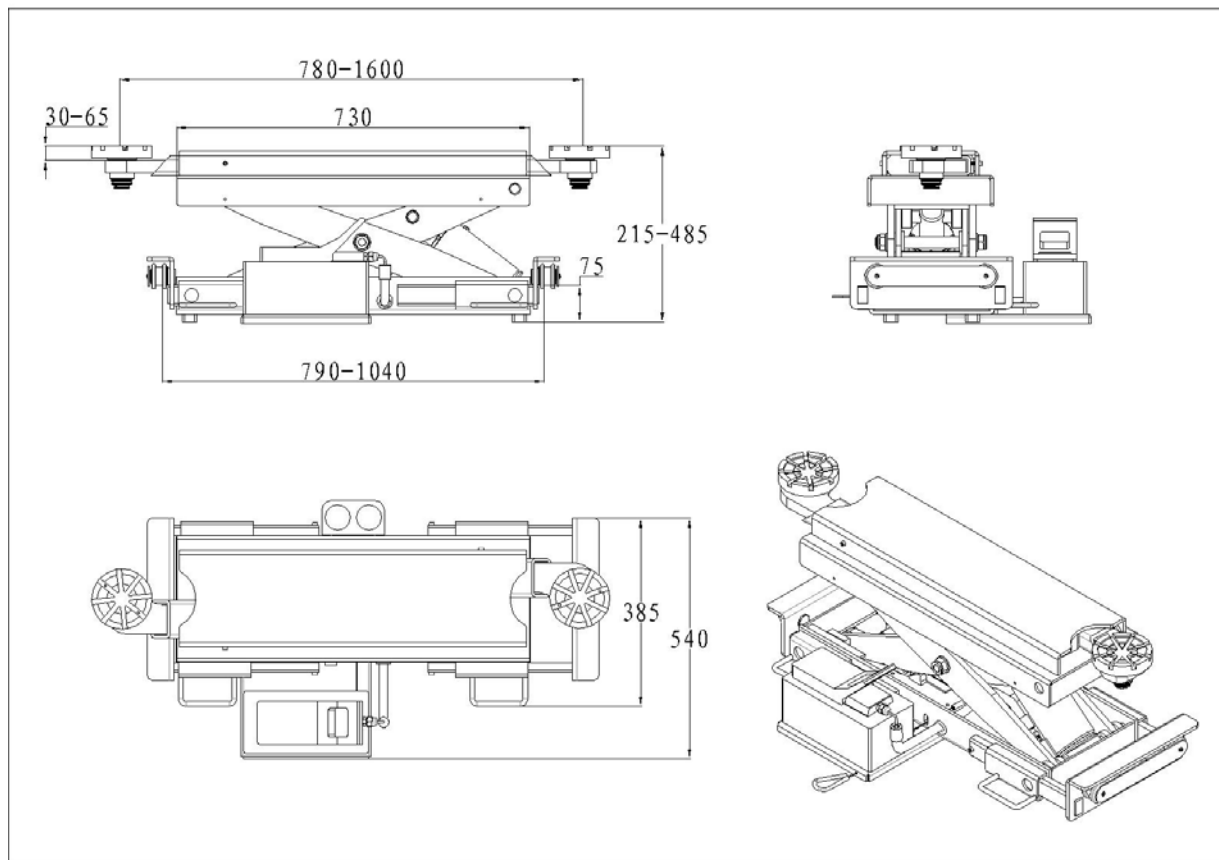


Fig. 1 (Dimension picture)

2. Installation and use

2.1. The jacking beam installation

- Adjust the running gap of the jacking beam, and put it on the sliding guide rail of the lift. (Fig 2)
- Push the jacking beam to ensure itself can slide flexibly on the sliding guide rail.
- Prepare a strip of air hose with quick coupling, and connect it with the air inlet of the jacking beam.



Fig. 2

2.2. No load of machine test

- Before operation, lift the pull rod upward to ventilate the oil tank. (Fig. 3)
- Connect the air source. The air pressure is 0.6-0.8Mpa
- Press the pedal of the pneumatic hydraulic pump to lift the jacking beam slowly. (Fig. 4)

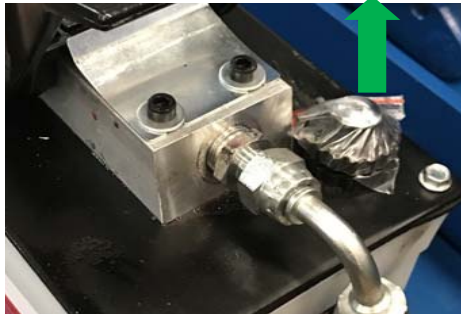


Fig .3



Fig. 4

- Press the oil return pedal of the pneumatic hydraulic pump; check whether the safety pawl is correctly located. (Fig. 5)
- Go on pressing the oil return pedal; open the insurance wire rope of the trolley to lower the jacking beam. (Fig. 6)



Fig .5



Fig. 6

2.3. Load of machine test

- Push the jacking beam to the front/rear axle position of vehicle, pull out the support arm and rotary the rubber pallet under the force bearing point of the underpan.
- Lift the platform of the jacking beam and check whether the jacking beam is steadily. Lower the platform of the jacking beam and check whether the safety pawl is correctly located.

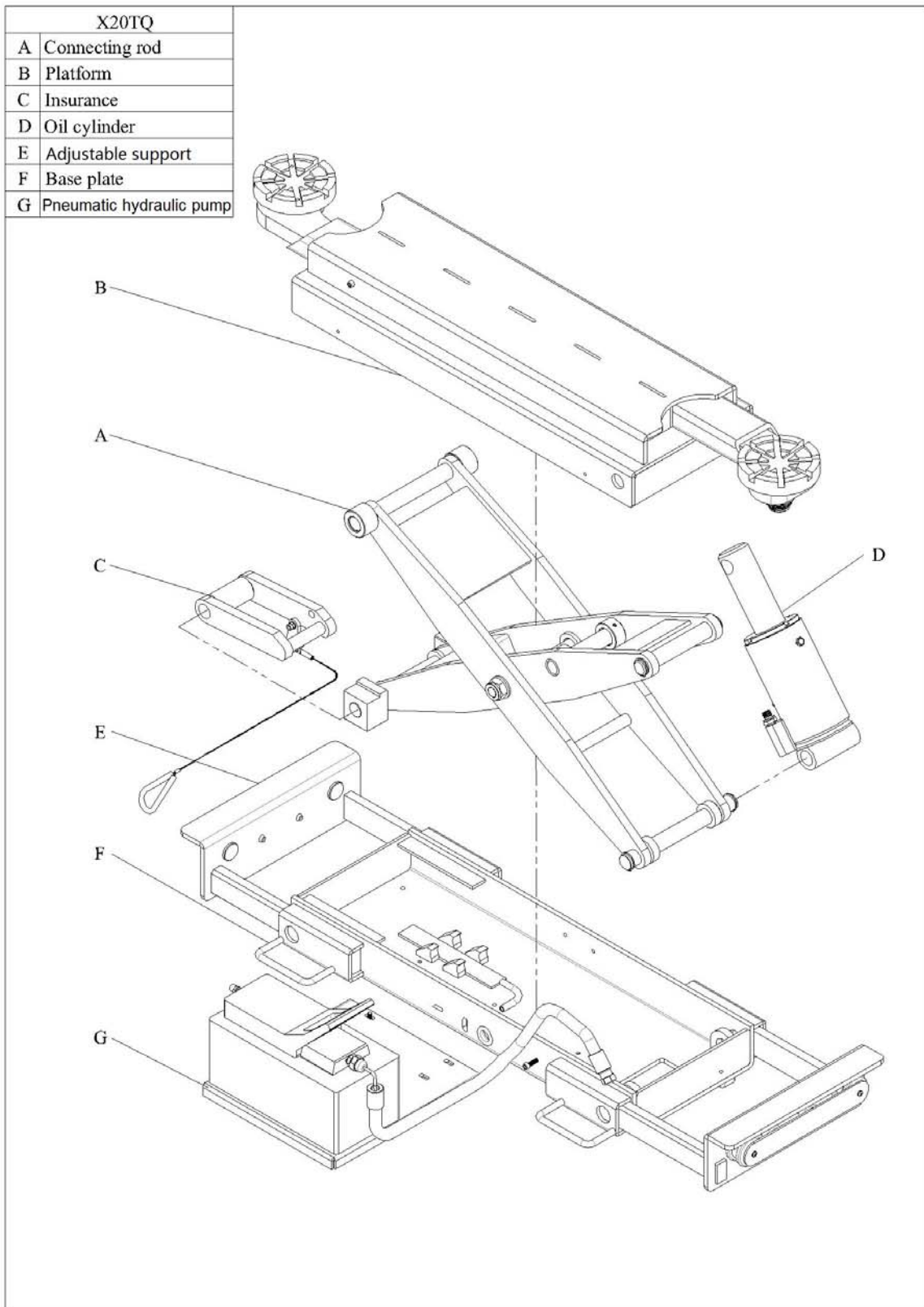


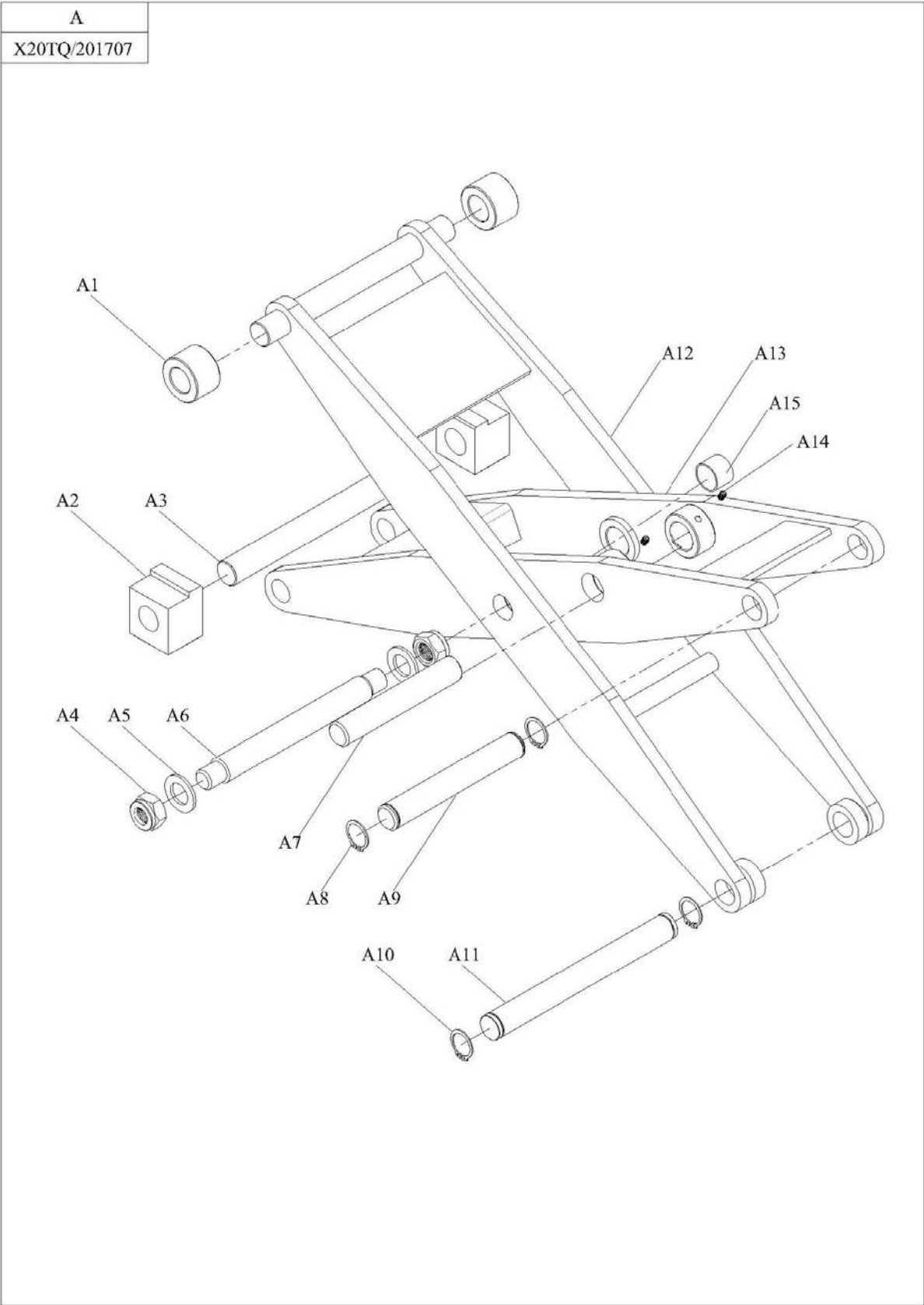
Test vehicle whose weight doesn't exceed maximum lift weight.
Check whether the oil line and the airline are leakage

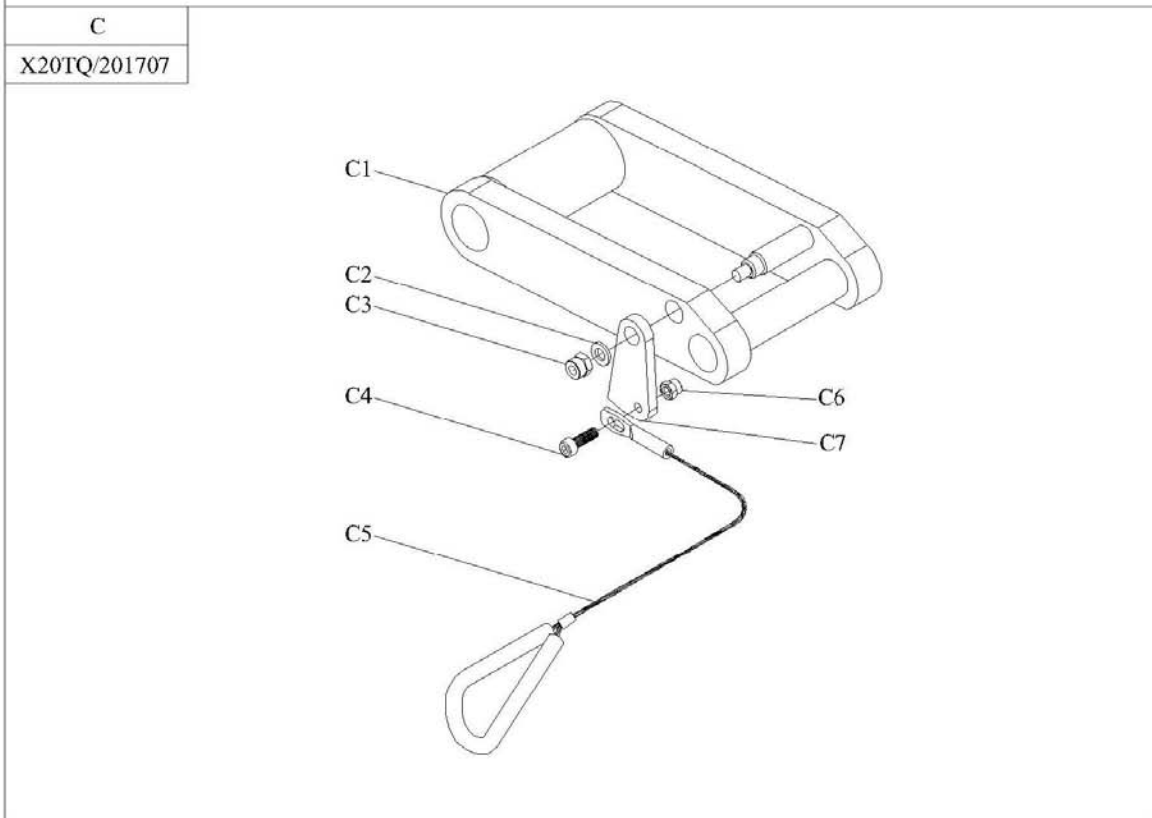
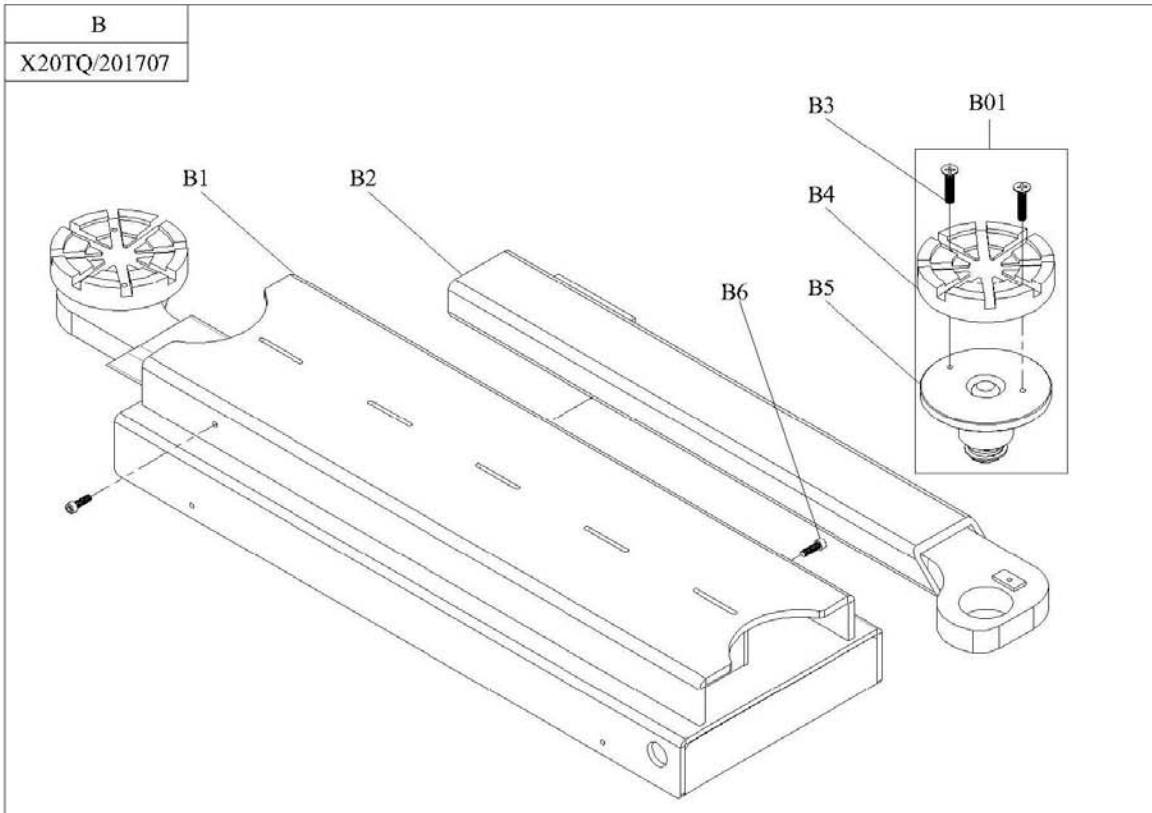
2.4. Points of attention

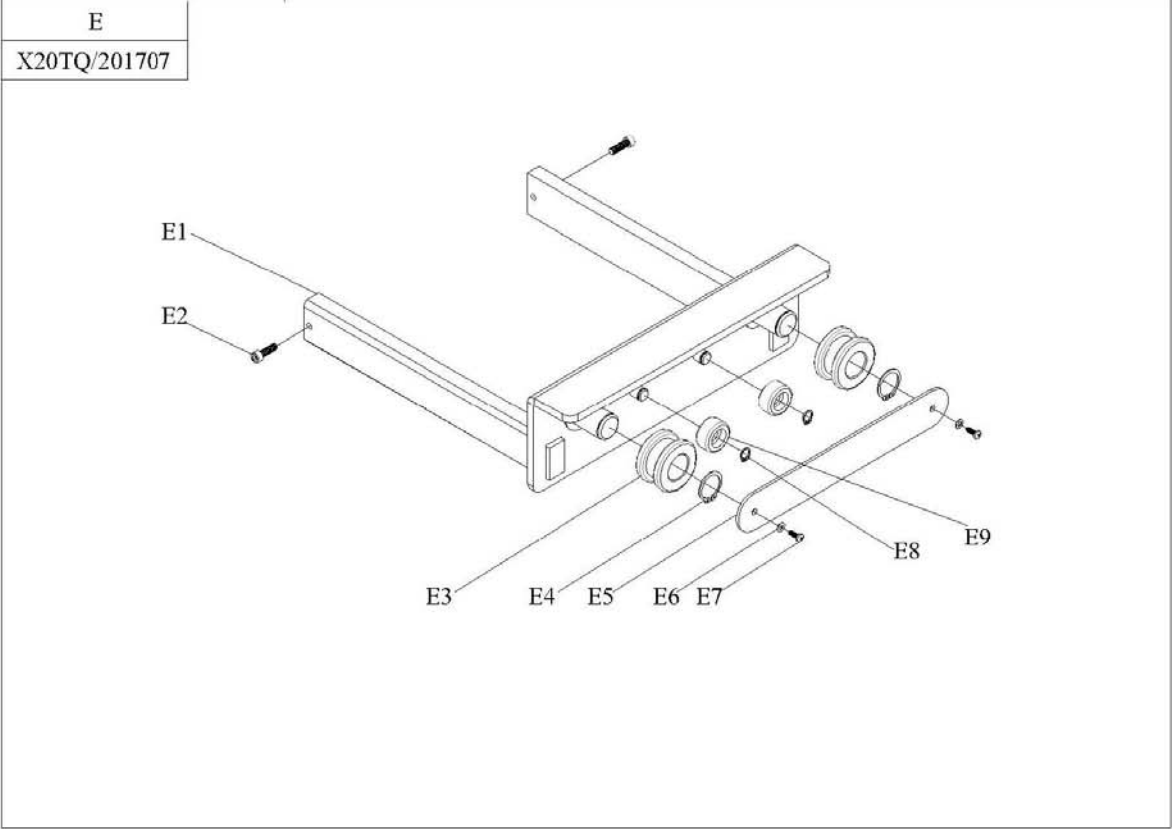
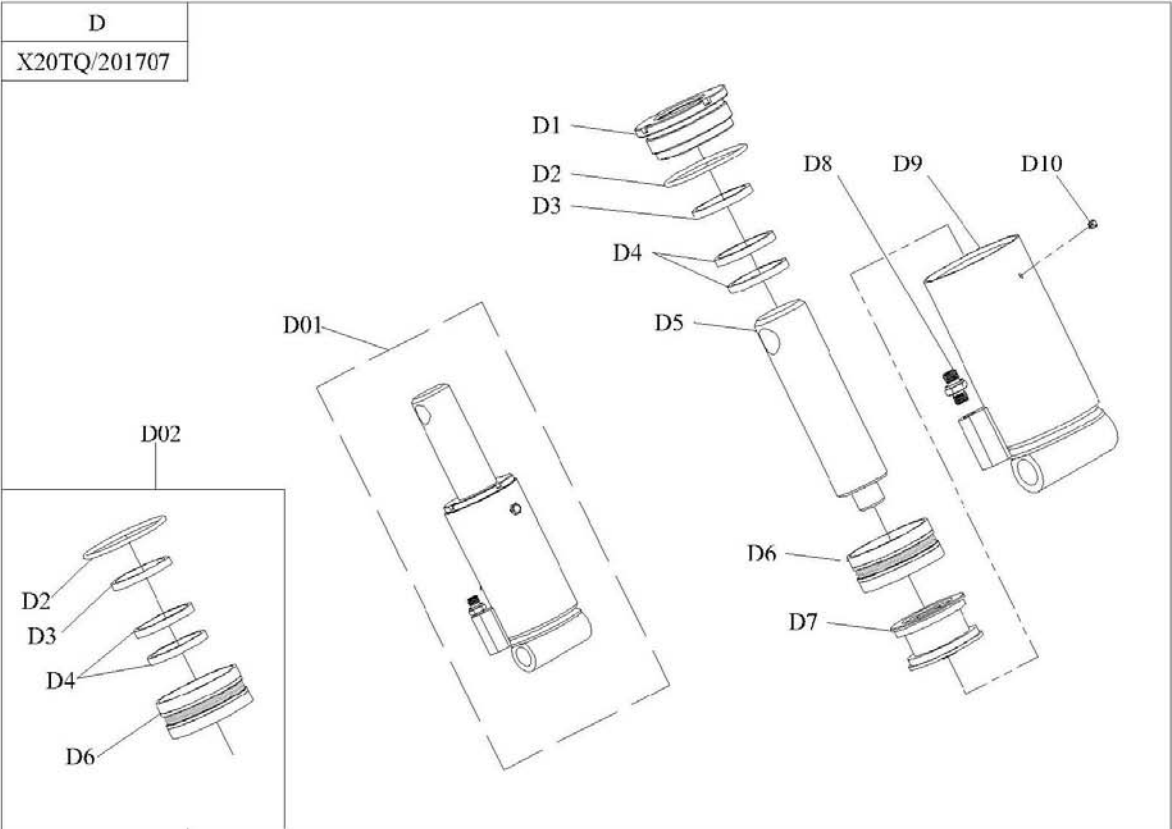
- Before lifting, make sure the rubber pallet at the force bearing point of the underpan to avoid sliding and car damage.
- During the operation, check whether the safety pawl is correctly located.
- The jacking beam cannot lift any more when it lifts to the secondary gear.
- Make sure the insurance claw falls on the insurance gear during operation.
- When lower the jacking beam, first lift a little, then pull the insurance wire rope in order to disengage the insurance gear, finally lower the jacking beam .
- Use the hydraulic oil for the pump according to the directions, change the oil once a year, let the old oil clear completely, when changing the oil in order to prevent the new oil from dirtying.
- Open the ventilation hole at the oiling lid when working.
- In order to ensure the air source clean, the separator of water from air must be installed before the air intake. (So the service lift can be raised for 5-20 times.

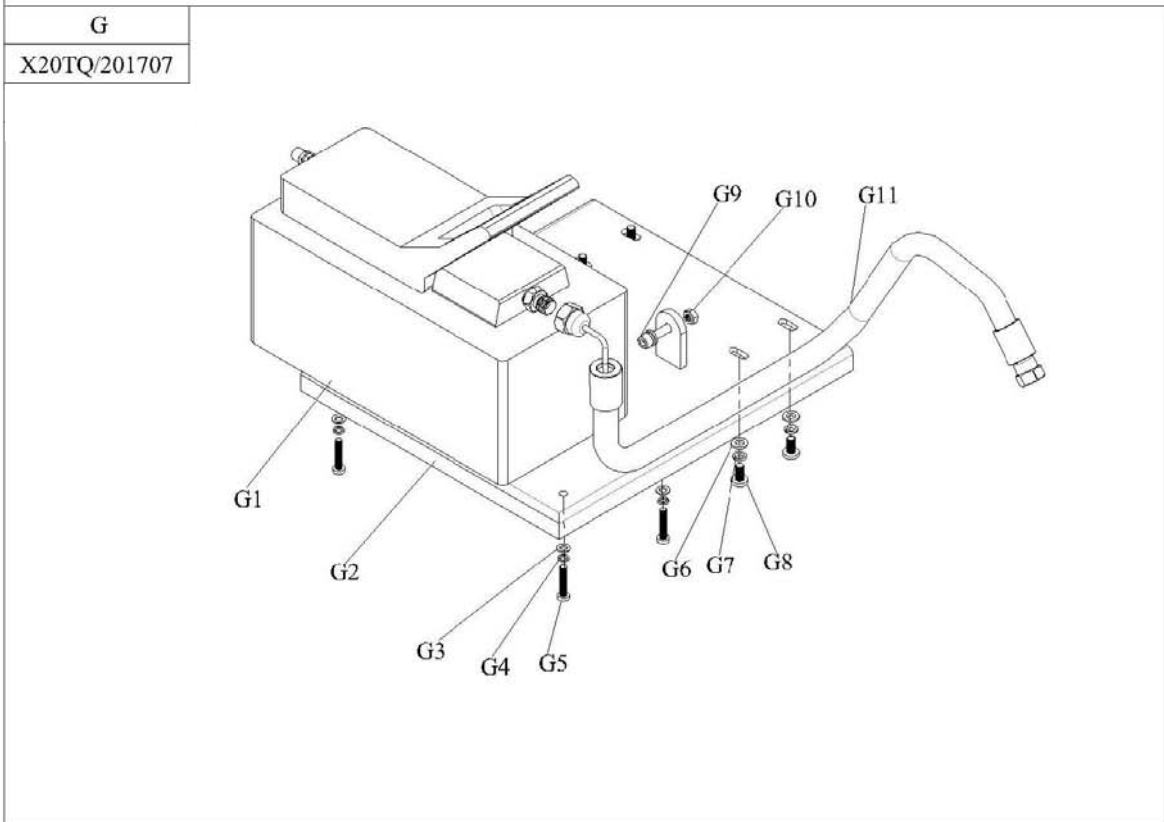
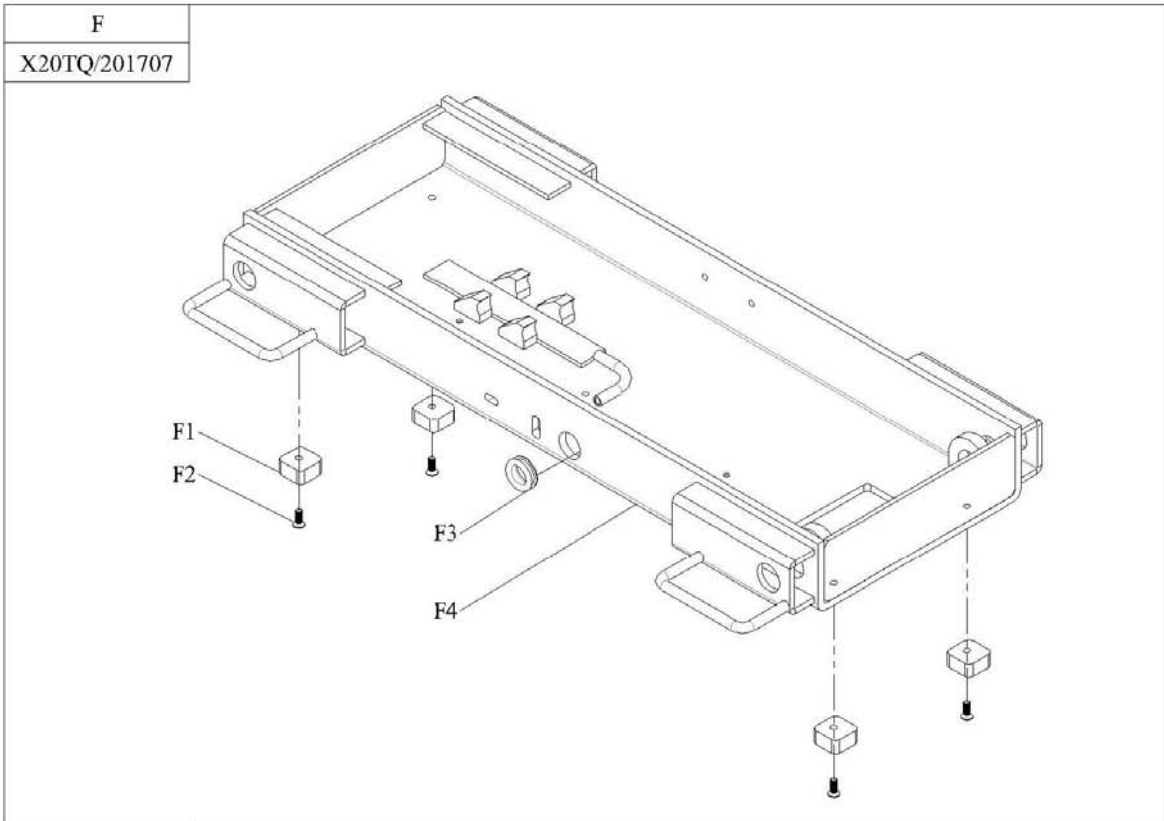
3. Explosion drawing











4. Explosion list

X20TQ explosion list				
area	code	part No.	model	name
A X20TQ/ 201707	A1	XX-30T-000200-0	UX30T-00-2	head pulley
	A2	XG-30T-000100-0	UX30T-00-1	slider
	A3	XX-30T-001000-0	UX30T-00-10	slider shaft
	A4	B-004-200001-2	GB/T6182-2000 M20	hex locking nut
	A5	B-040-223730-1	GB/T95-2002 Ø20	flat washer
	A6	XX-30T-000300-0	UX30T-00-3	center shaft
	A7	XX-30T-000500-0	UX30T-00-5	oil cylinder upper shaft
	A8	B-055-250001-0	GB/T894.1-1986 Ø25	shaft snap ring
	A9	XX-30T-000400-0	UX30T-00-4	the connecting shaft
	A10	B-055-280001-0	GB/T894.1-1986 Ø28	shaft snap ring
	A11	XX-30T-000600-0	UX30T-00-6	oil cylinder stationary shaft
	A12	XZ-20T-030000-Z	UX20T-03	outer connecting rod assembly
	A13	XZ-20T-020000-Z	UX20T-02	inner connecting rod assembly
	A14	B-007-060101-0	GB/T78-2007 M6×10	hex socket set screw with cone point
	A15	S-040-002520-0	282520	bushing
B X20TQ/ 201707	B1	XZ-20T-010000-Z	UX20T-01	platform assembly
	B2	XZ-20T-040000-Z	UX20T-04	telescopic boom
	B3	B-017-080161-0	GB/T819.1-2000 M8×16	cross pan head screw
	B4	S-013-107000-1	107mm	supporting rubber mat
	B5	S-013-107000-2	107mm	the tray support
	B6	B-010-060161-0	GB/T70.1-2000 M6×16	hex socket head cap screw
	B01	C-030-T40000-04	107mm	the tray assembly
C X20TQ/ 201707	C1	XZ-30T-080000-Z	UX30T-08	insurance block
	C2	B-040-061216-1	GB/T95-2002 Ø6	flat washer
	C3	B-001-060001-0	GB/T6182-2000 M6	hex locking nut
	C4	B-010-050161-0	GB/T70.1-2000 M5×20	hex socket head cap screw
	C5	S-300-020000-0	700mm	Wire rope assembly
	C6	B-001-050001-0	GB/T6182-2000 M5	hex locking nut
	C7	XX-30T-000800-0	UX30T-00-8	the insurance limit block
D X20TQ/ 201707	D1	XZ-30T-070300-Z	UX30T-07-3	oil cylinder cover
	D2	S-000-080005-0	Ø80×5	O-ring
	D3	S-005-058060-0	AD48-50×58	dust ring
	D4	S-045-008025-0	8×2.5	guide ring
	D5	XG-30T-070100-0	UX30T-07-1	oil cylinder piston rod
	D6	S-007-060224-0	K03-80×60	combined seal ring
	D7	XZ-30T-070200-Z	UX30T-07-2	piston

	D8	S-011-010400-10	Inner cone G1/4 19 end face 1/4	oil pipe straight union
	D9	XZ-30T-070100-Z	UX30T-07.01	oil cylinder welding assembly
	D10	S-023-010800-0	PSV-01 G1/8	muffler
	D01	XA-30T-070000-0	UX30T-07	oil cylinder
	D02	XA-30T-070000-1	Ø80/Ø50	oil cylinder seal kit
E X20TQ/ 201707	E1	XZ-30T-020000-Z	UX30T-02	adjustable support
	E2	B-010-060121-0	GB/T70.1-2000 M6×20	hex socket head cap screw
	E3	XX-30T-001400-0	UX30T-00-14	roller
	E4	B-055-250001-0	GB/T95-2002 Ø25	flat washer
	E5	XZ-30T-000700-0	UX30T-00-7	roller limit plate
	E6	B-040-040908-1	GB/T95-2002 Ø4	flat washer
	E7	B-024-040101-0	GB/T818-2000 M4×10	cross pan head screw
	E8	B-055-100001-0	GB/T95-2002 Ø10	flat washer
	E9	XG-30T-000900-0	UX30T-00-9	small roller
F X20TQ/ 201707	F1	XG-30T-001200-0	UX30T-00-12	non-slip mat
	F2	B-017-080161-0	GB/T819.1-2000 M6×18	cross pan head screw
	F3	D-079-800150-0	UX30T-00-15	coil
	F4	XZ-30T-010000-Z	UX30T-01	base plate
G X20TQ/ 201707	G1	H-052-000096-A2	96A2-QIB	pneumatic hydraulic pump
	G2	XZ-30T-090000-Z	UX30T-09	pneumatic hydraulic pump mounting plate
	G3	B-040-051010-1	GB/T95-2002 Ø5	flat washer
	G4	B-050-050000-0	GB/T93-1987 Ø5	spring washer
	G5	B-024-502500-1	GB/T845—1985 M5×25	cross recessed pan head tapping screws
	G6	B-040-061216-1	GB/T95-2002 Ø6	flat washer
	G7	B-050-060000-0	GB/T93-1987 Ø6	spring washer
	G8	B-010-060161-0	GB/T70.1-2000 M6×16	hex socket head cap screw
	G9	B-010-060201-0	GB/T70.1-2000 M6×25	hex socket head cap screw
	G10	B-001-060001-0	GB/T6182-2000 M6	hex locking nut
	G11	Q-001-000050-0	500mm	high-pressure oil pipe