

# 71.045.4PR

## FOUR POST LIFT INSTRUCTION & MAINTENANCE MANUAL



**Jimmy Industrial Pty Ltd**  
**5 Cord St**  
**Dudley Park, 5008**  
**Ph: (08) 8269 9700**  
**W: [www.jimmytools.com.au](http://www.jimmytools.com.au)**  
**E: [sales@jimmytools.com.au](mailto:sales@jimmytools.com.au)**



Read this entire manual carefully and completely before installation or operation of the lift

## SCISSOR LIFT INSTRUCTION MANUAL

INDEX	PAGE
1.Packing, transport and storage .....	- 3 -
1.1.Packing: .....	- 3 -
1.2.Transport: .....	- 3 -
1.3.Storage .....	- 4 -
2.Manual introduction .....	- 4 -
3.Description of the machine .....	- 4 -
3.1.Machine Application .....	- 4 -
3.2.Structure Features .....	- 5 -
3.3.Frame .....	- 5 -
3.4.Power unit .....	- 5 -
4. Specifications .....	- 6 -
4.1.Main technical parameter .....	- 6 -
4.2External dimension drawing .....	- 7 -
4.3.Types of vehicles suitable for .....	- 9 -
5. Safety .....	- 10 -
6. Installation .....	- 13 -
7. Adjustment .....	- 18 -
8. Operation .....	- 19 -
9. Maintenance and care .....	- 20 -
10.Trouble shooting table .....	- 21 -
11.Hydraulic pressure elements diagram .....	- 22 -
12.Oil hose connection diagram .....	- 23 -
13.Circuit drawing .....	- 24 -
14.Explosion drawing .....	- 26 -

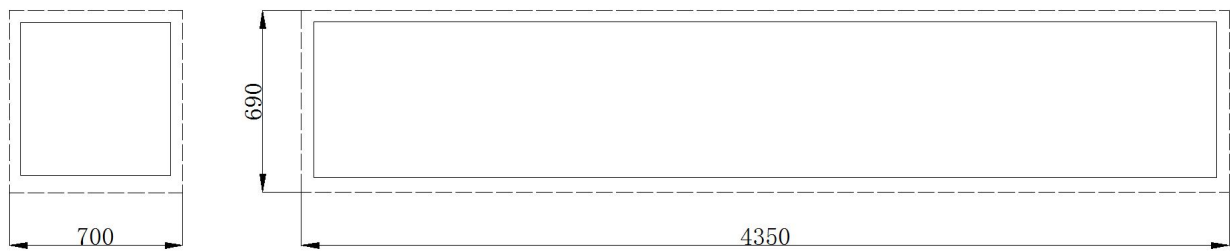
## 1. Packing, transport and storage



All packing, lifting, handling, transport and unpacking operations are to be performed exclusively by expert personnel.

### 1.1. Packing

Standard equipment: hydraulic station and accessory, main and sub beam, front and back crossbeam, front post, back post, left and right approaching ramp, rolling jack, total is 7 pieces.



Picture 1

### 1.2. Transport:



Packing can be lifted or moved by lift trucks, cranes or bridge cranes. In case of slinging, a second person must always take care of the load, in order to avoid dangerous oscillations.

During loading and unloading operation, goods must be handled by vehicles or ships.

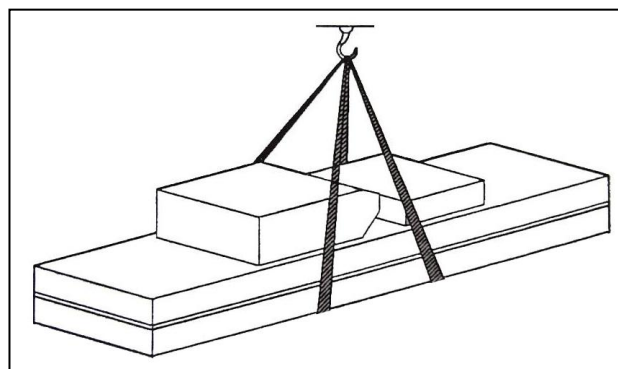
At the arrival of the goods, verify that all items specified in the delivery notes are included. In case of missing parts possible defects or damage may due to transport operations.

If finding missing parts, possible defects or damage due to transport, one should examine damaged cartons to verify the condition of damaged goods and missing parts, also the person in charge or the carrier must be immediately informed.



The machine is heavy goods! Don't take manpower load and unload and transporting way into consideration, the safety of working is important.

Furthermore, during loading and unloading operation goods must be handled as shown in the picture. (Picture 2)



Picture 2 (Goods-lifted)

### 1.3.Storage:

- The machine equipment should be stocked in the warehouse, if stocked outside should do the disposal well of waterproof.
- Use box truck in the process of transport, use container storage when shipping.
- The control box should be placed perpendicularly during the transport; and prevent other goods from extrusion.
- The temperature for machine storage : -25°C-- 55°C

## 2. Manual introduction



**This manual has been prepared for workshop personnel expert in the use of the lift operator and technicians responsible for routine maintenance fitter.**

Workers should read the <<Instruction & Maintenance Manual>> carefully before carrying out any operation with the lift. This manual contains important information regarding:

- The personal safety of operators and maintenance workers.
- Lift safety.
- The safety of lifted vehicles.



Several tips should be done by the operator as follow:

- 1.Well conserving the manual. Manufacturer owns the right to make little change for the manual owing to the improvement of technology.
- 2.Good disposal the used oil.
- 3.The machine must be demolished by authorized technicians, just like for assembling

## 3. Description of the machine

### 3.1. Machine Application

Four post lift is suitable for use in vehicle tests, maintenance and care for various types of small automobiles.



**Lifts are designed and built to lift vehicles and hold them in the elevated position in an enclosed workshop. All other uses of the lifts are unauthorized. In particular, the lifts are not suitable for:**

- Washing spray work;
- Use in outdoors;
- Creating raised platforms for personnel or lifting personnel;
- Use as a press for crushing purposes;
- Use as elevator;
- Use as a lift jack for lifting vehicle bodies or changing wheels.

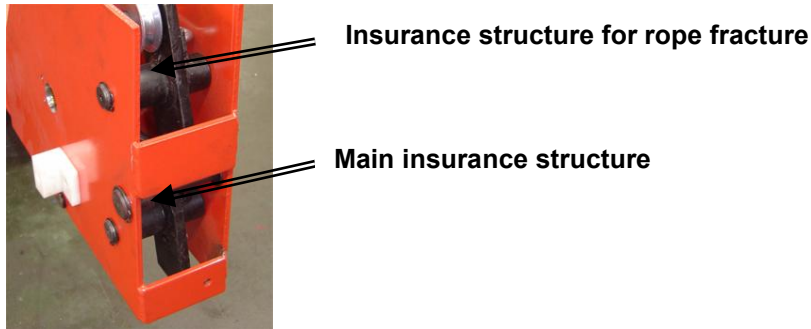


The manufacturer is not liable for any injury to persons or damage to vehicles and other property caused by the incorrect and unauthorized use of the lifts.

### 3.2. Structure Features

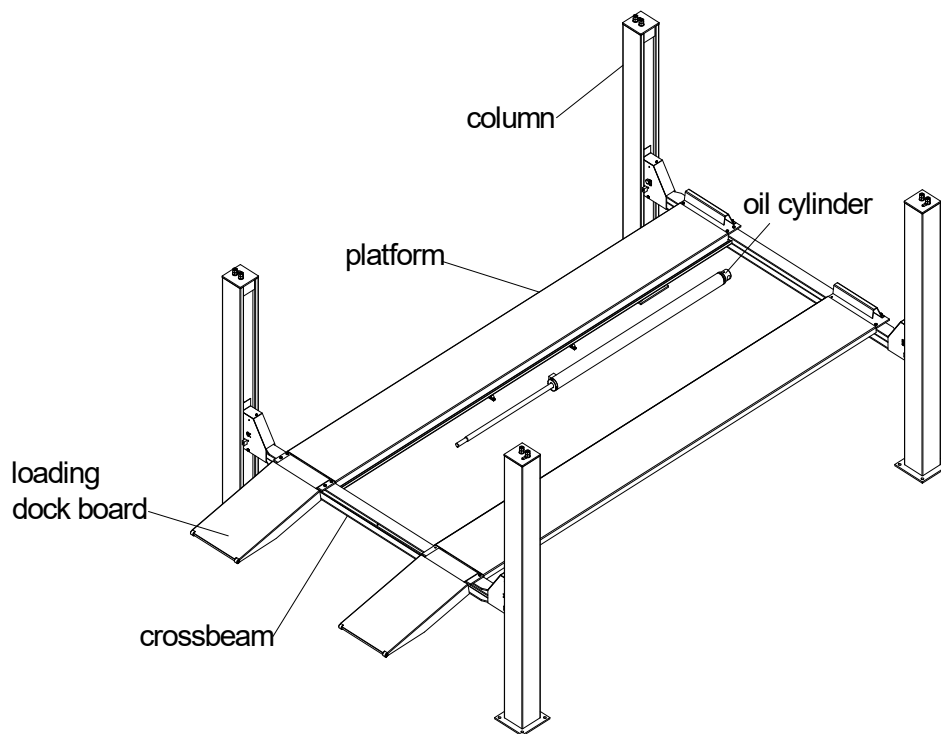
- imported electric components.
- Adjustable width between two platforms makes the lift more flexible for different vehicles.
- Device performs stable and liable work with anti-breaking rope safety insurance.
- with second lifting trolley guide rail and can add a rolling jack.

#### Safety lock structure



Picture 3

### 3.3. Frame



Picture 4

### 3.4. Power unit

Under the control box is hydraulic oil tank and hydraulic pump, valve and other control system. On the control box is electrical system.

Function of each valve on the power unit	
Name	Function
Gear pump	Extract hydraulic oil and provide high pressure.
Connecting block	Connect the motor and the gear pump.
Motor	Provide power for the gear pump.
Overflow valve	Adjust oil pressure.
Throttle valve	Adjust the speed of falling.
Lowering solenoid valve	Control flow of the hydraulic oil.
One-way valve	Control the one-way flow of hydraulic oil.

Table 1

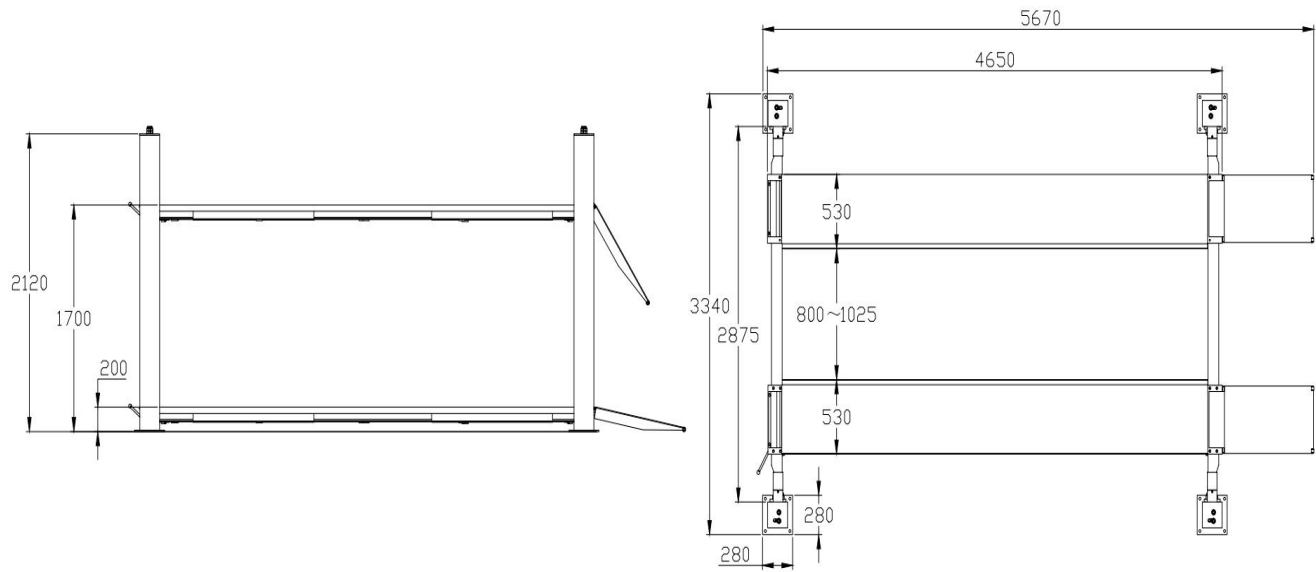
## 4. Specification

### 4.1.Main technical parameter

MODEL	4.5T
Drive	Electrical hydraulic
Max lift weight	4500kg
Lift height	1700mm
Platform initial height	200mm
Platform length	4650mm
Platform width	530mm
Lifting time	≤45S
Lowng time	≤30S
Overall width	3340mm
Overall length	5670mm
Power	3/N/PE~380V, 50Hz, 10A
Hydraulic oil	12 L 20# high abrasive hydraulic oil
Rolling Jack lifting Weight	2000kg/3000kg
Rolling jack lifting height	420mm
Rolling jack lifting length	880-1370mm
Rolling jack wheel distance	780-1200mm
Rolling jack lifting time	Electrical RJ≤5s Manual or pneumatic RJ ≤20s
Rolling jack lowering time	≤10S
Pneumatic RJ voltage	6-8Kg/cm2
temperature	5-40℃
Moist	30-95%
Noisy	<76db
Storage temperature	-25-55℃
Optional	Rolling jack

Table 2

4.2 External dimension drawing



Picture 5(lift dimension picture)

**MOTOR PUMP:**

Type-----Y90L  
Power-----2.2KW  
Voltage-----AC 400V or 23V ±5%  
Frequency-----50Hz  
Poles-----4  
Displacement-----4.3 cc/r-  
Transmission: joint type-----Director  
Relief valve-----210 Bar  
Continuous working pressure-----250 bar  
Intermittent working pressure-----150~300 bar  
Speed-----1450rpm/min  
Building shape-----B14  
Isolation class-----F

When connecting the motor refer to the enclosed wiring diagrams on the data plate on the casing.

**Oil:**

Inject 12 liters of hydraulic oil into the oil tank.

**NOTE:** To install the lift it is necessary to execute suitable foundations with the following .characteristics:

- concrete type 425, the drying days are 15 days.
- thickness of concrete $\geq$ 150mm, the levelness of whole length $\leq$ 10mm



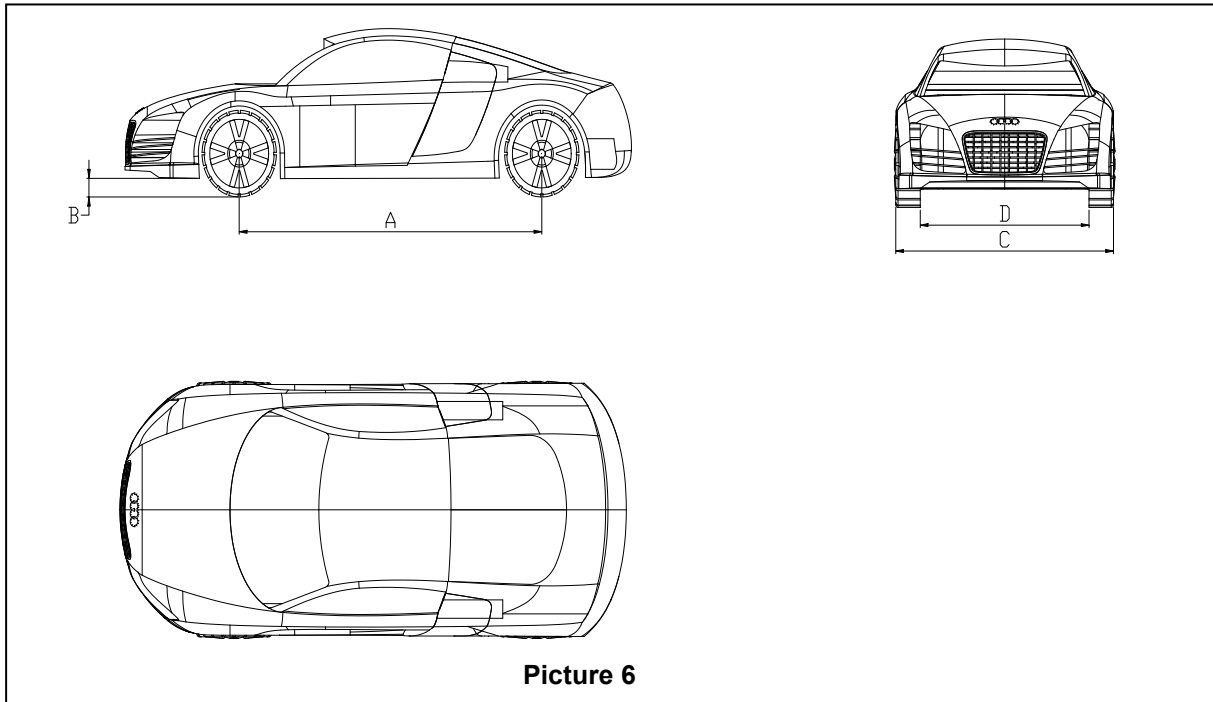
**The thickness and leveling of the base concrete are essential and the leveling adjustment ability of the machine itself cannot be relied upon to excessively.**

Types of vehicle suitable for being lifted and overall dimensions.

### 4.3. Types of vehicles suitable for

Lift are suitable for virtually all vehicles with total weight of no more than 4500kg and with dimensions not exceeding the below data.

The following diagrams illustrate criteria used to define the operating limits of the lift.



Picture 6

	4.5T	
	Min.(mm)	Max.(mm)
A	2300	4000
B	110	
C		2000
D	900	



**Caution:** The lower parts of the vehicle underbody could interfere with structural parts of the lift, take particular parts of the sports car.

The lift will also handle customized or non-standard vehicles, provided they are within the maximum specified carrying capacity.

Also the personnel safety zone must be defined in relation to vehicle with unusual dimensions.



**Read this chapter carefully and completely since important information for the safety of the operator or others in case of improper use of the lift is included.**

In the following text there are clear explanations regarding certain situations of risk or danger that may arise during the operation or maintenance of the lift, the safety device installed and the correct use of such systems, residual risks and operative procedures to use (general specific precautions to eliminate potential hazards).



**Lifts are designed and built to lift vehicles and hold them in the elevated position in an enclosed workshop. All other uses of the lifts are unauthorized. In particular, the lifts are not suitable for:**

- Washing spray work;**
- Use in outdoors;**
- Creating raised platforms for personnel or lifting personnel;**
- Use as a press for crushing purposes;**
- Use as elevator;**
- Use as a lift jack for lifting vehicle bodies or changing wheels.**



The manufacturer is not liable for any injury to persons or damage to vehicles and other property caused by the incorrect and unauthorized use of the lifts.

During lifting and descent, the operator must remain in the control station as the diagrams illustrated.

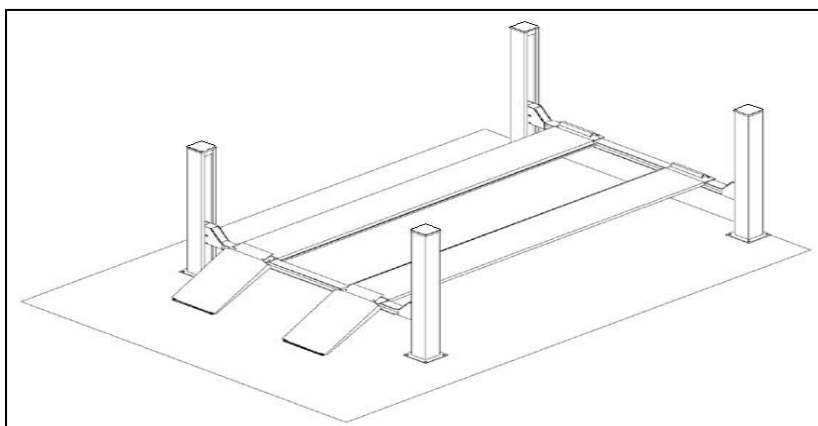
As the diagrams illustrated, the presence of persons inside the danger zone indicated is strictly prohibited. During operations persons are admitted to the area beneath the vehicle only when the vehicle is already in the elevated position, when the platforms are stationary, and when the mechanical safety devices are firmly engaged (e.g.: the safety gear is completely locked).



Do not use the lift without protection devices or with the protection devices inhibited.

Failure to comply with this regulation can cause serious injury to persons, and irreparable damage to the lift and the vehicle being lifted.

## 5. Safety



Picture 7



**General precautions**

The operator and the maintenance fitter are required to observe the prescriptions of safety regulation in force in the country of installation of the lift.

Furthermore, the operator and maintenance fitter must:

- Always work in the stations specified and illustrated in this manual;
- Never remove or deactivate the guards and mechanical, electrical, or other types of safety devices;
- Read the safety notices placed on the machine and the safety information in this manual.



**In the manual all safety notices are shown as follows:**

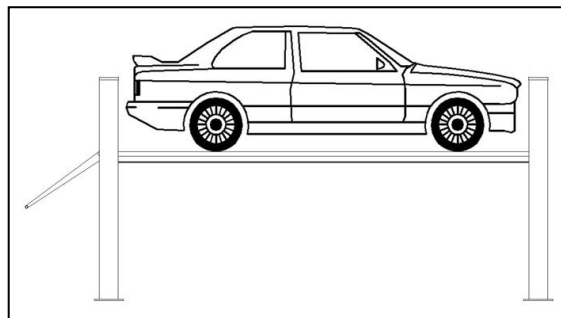
**Warning:** indicates following operations that are unsafe and can cause minor injury to persons and damage the lift, the vehicle or other property.



**Risk and protection devices**

For optimal personal safety and safety of vehicles, observe the following regulations:

- Do not enter the dangerous area while the vehicles is being lifted. **(Picture 8)**
- Be sure to lift only approved vehicles, never exceed the specified carrying capacity, maximum height, and projection (vehicle length and width);
- Make sure that there is no person on the platforms during up and down movements and during standing. **(Picture 8)**



**Picture 8**



**General risks for lifting or descent**

The following safety equipments are used to protect over loading or the possibility of engine failure.

In the condition of over loading, the over-flow valve will open and directly return oil to the oil tank. **(Picture 9)**



**Picture 9**

**Risk of crushing**



Possible if the operator controlling the lift is not in the specified position at the control panel.

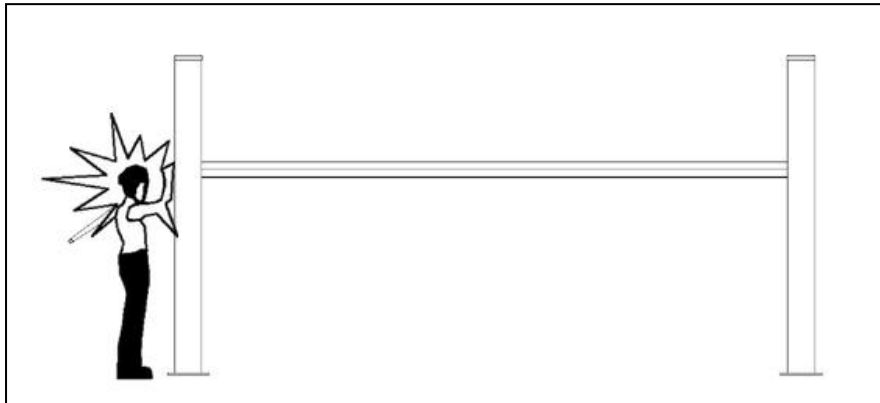
When the platforms (and vehicle) are lowering the operator must never be partly or completely underneath the movable structure. Always remain in the control zone.

**Risk of impact (Picture 10)**



Caused by the parts of the lift or the vehicle that is positioned at head height.

When, due to operational reasons, the lift is stopped at relatively low elevations personnel must be careful to avoid impact with parts of the machine not marked with special color.



Picture 10



**Risk of operator falling**

No person is permitted in the platform or in the vehicle when the lift lifting and lowering,

**Risk of vehicle falling from lift**



This hazard may cause of incorrect positioning of the vehicle on the platforms, incorrect stopping of the vehicle, or vehicles of dimensions that are not compatible with the capacity of the lift.

**Never attempt to perform test by driving the vehicle while it is on the platforms**



**Never leave objects in the lowering area of the movable parts of the lift.**

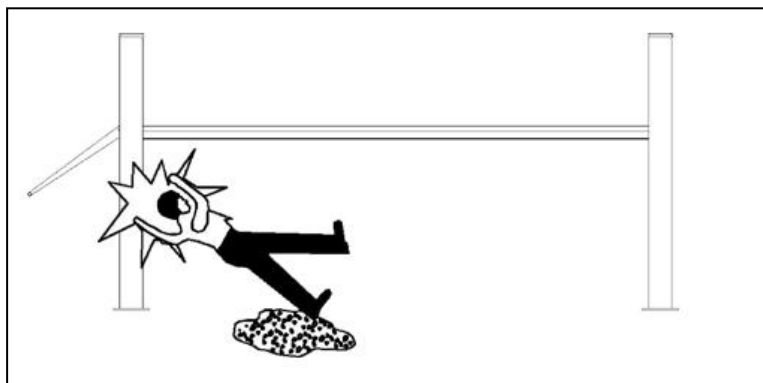
**Risk of slipping(Picture 11)**



Caused by lubricant contamination of the floor around the lift.

The area beneath and immediately surrounding the lift and also the platforms must be kept clean.

Remove any oil spills immediately.



Picture 11

**Risk of electric shock**



Risk of electric shock in areas of the lift housing electrical wiring.

Do not use jets of water, steam solvents or paint next to the lift, and take special care to keep such substances clear of the electrical control panel.



**The handling of safety devices is strictly forbidden. Never exceed the maximum carrying capacity of the lift, make sure the vehicles to be lifted have no load.**

**It is therefore essential to adhere scrupulously to all regulations regarding use, maintenance and safety contained in this manual.**

## 6. Installation



**Skilled and authorized personnel only should be allowed to perform these operations, follow all instructions shown below carefully, in order to prevent possible damage to the car lift or risk of injury to people.**

### Installation requirements (Picture 12)

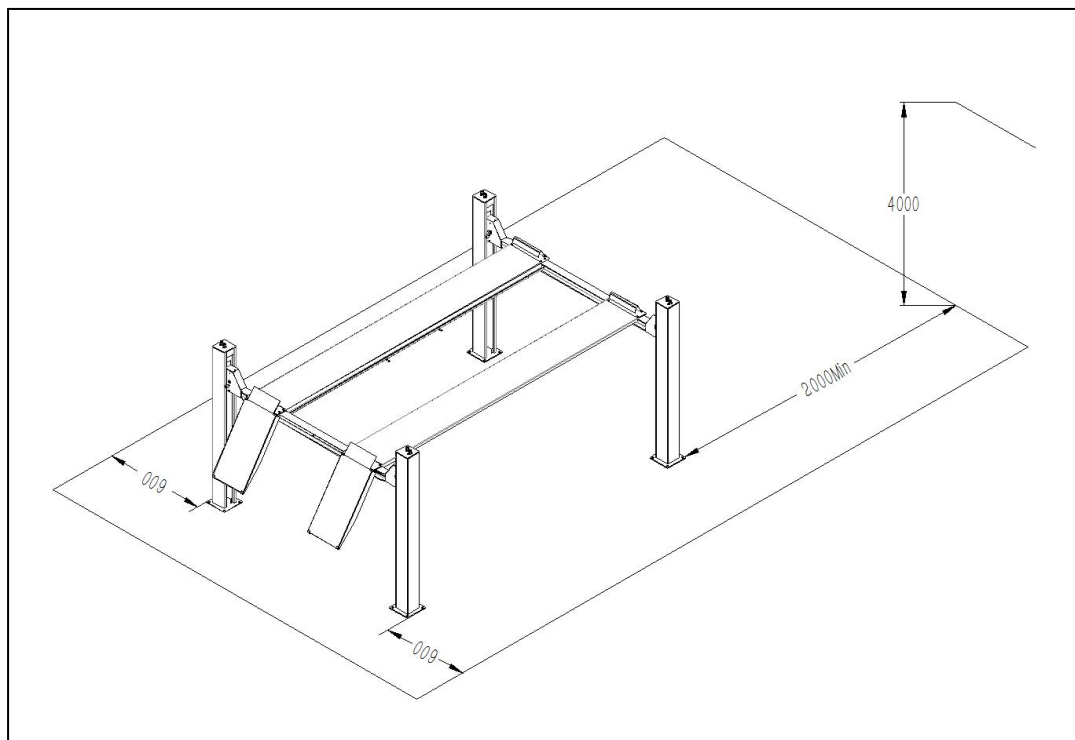
The car lift must be installed according to the specified safety distances from walls must be 600 mm at least, taking into consideration of the necessary space to work easily. Further space for the control site and for possible runways in case of emergency is also necessary; the room must be previously arranged for the power supply for the car lift. The room must be 4000 mm in height, at least, the car lift can be placed on any floor, as long as it is perfectly level and sufficiently resistant. ( $\geq 250\text{kg/cm}^2$ )

-All parts of the machine must be uniformly lit with sufficient light to make sure that the adjustment and maintenance operations specified in the manual can be performed safely, and without areas of shadow, reflected light, glare and avoiding all situations that could give rise to eye fatigue.

-The lighting must be installed in accordance with the laws in force in the place of installation.

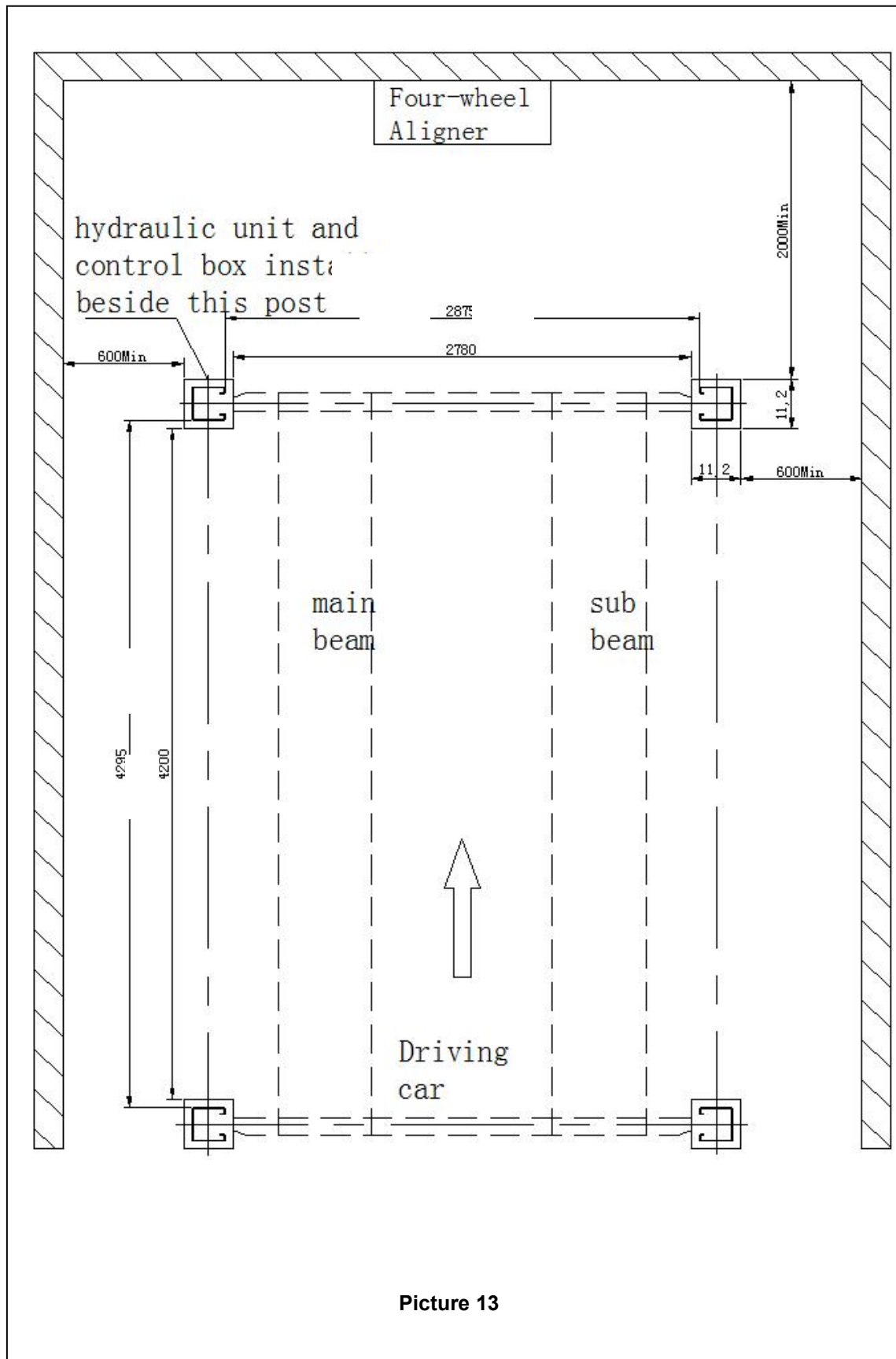
-the thickness and levelness of the base concrete are essential

-thickness of concrete  $\geq 150\text{mm}$ , the levelness of whole length  $\leq 10\text{mm}$ .



Picture 12

Installation scheme for four post lift



Picture 13

**Crossbeam installation:**

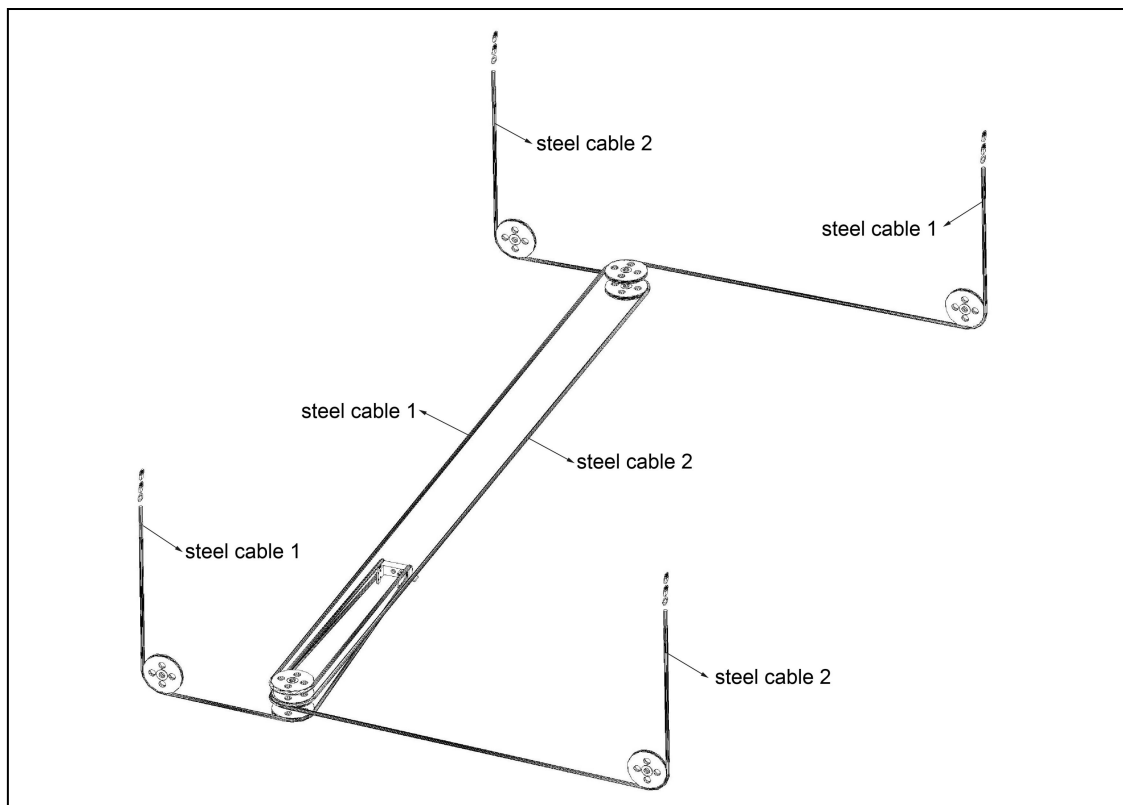
- fix the front and back crossbeam on the floor.
- Put a wood or an iron under the crossbeam in order to raise 100-300mm.
- fix eight nylon anti-crashes inner and outer of the crossbeam.

**Platform installation:**

- Put two platforms on the transom, the main platform should located on the left side of the moving vehicle direction, the sub-platform located on the right side, the rolling wheel notch on the platform should inside.
- check two platforms and the diagonal of two transom are straight, then put four posts on the side of the transom, and fix the nuts on the roof of the post with steel cable, put the safety teeth trough the limit axis, also fix the nuts on the roof of the post.

**Steel cable connection:**

- Unload the nuts of the steel cable, avoid the steel cables being twining with each other.
- The short steel cable goes through the groove of pulley on the left side. Loose the shaft of pulley inside the crossbeam. Install the shaft of pulley after finishing putting on the steel cable.



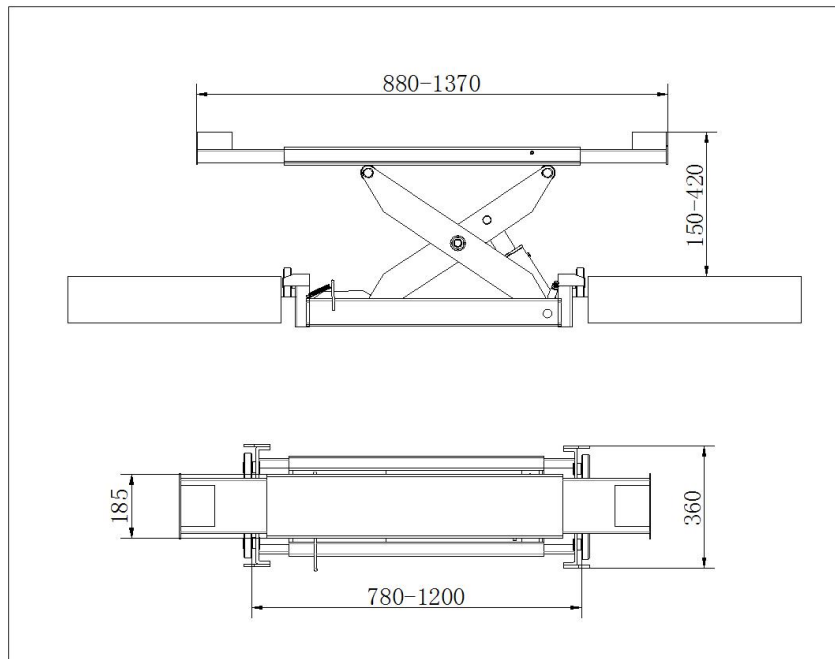
Picture 14

**Post installation:**

- Unload the screws under the insurance in the post.
- stick the column on the nylon block of the crossbeam, insert the insurance strip into the groove of crossbeam
- measuring the column and use the thick iron mat to make the column base plate vertical with the column.

**Rolling jack installation(optional part):**

- adjust the distance of the rolling jack; put the rolling jack between the slide track.
- adjust the sub beam to make sure the sliding of the rolling jack.



Picture 15

**Line connection:**

Connect the electrical and oil line according to the electric wiring diagram and oil line connection



To avoid the unexpected lift closure due to mechanical safety device release insert wooden pieces in the inner part of the base frame.

Pay attention not to work under the lift until the hydraulic system has not been completely filled with hydraulic oil.

**Electrical circuit connection:**



According to the electric connection.

Skilled personnel only are allowed to perform the operations shown below.

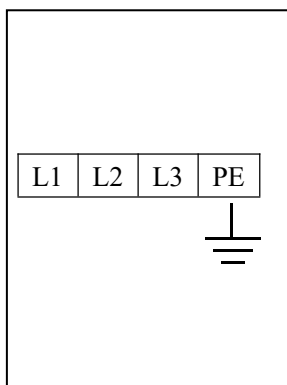
-open the control box front cover

-connection of power supply: the 400 three-phase four-wires (4\*2.5mm<sup>2</sup>) for power supply are connected to terminals 1#, 2#, 3#. The PE is connected to the ground wire. (Picture 16)

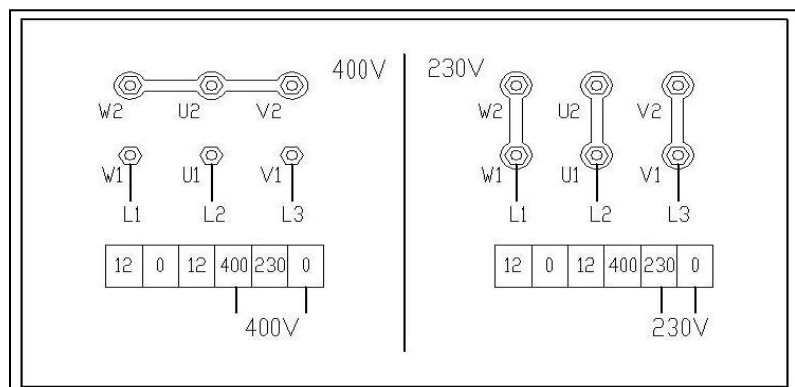
-Electric motor wire connection: connect the control box with U1 # 、 V1#、 W1# electric wire to motor wire box.

-therefore if you wish the lift to operate at 230V single-phase, change the connection on the transformer and motor.

(Picture 17)



Picture 16



Picture 17

### Hydraulic hoses connection:

Follow <<oil hose connection diagram >> to connect the hydraulic oil hoses

Open the hydraulic oil tank, add 12L of hydraulic oil into the oil tank, the hydraulic oil is provided by the user.



Picture 18



**Make sure the clean of hydraulic oil, prevent any impurity into the oil line, lead the digest of the oil line and no working of the solenoid valve.**

-turn on "power" switch to turn on power, clicking the "up" button, check whether the motor turns clockwise (looking downward), if not , turn off "power" switch, change the phase of the motor.



**When turn on power, there is high voltage in the control box, only authorized person can operate.**

### Main machine adjustment

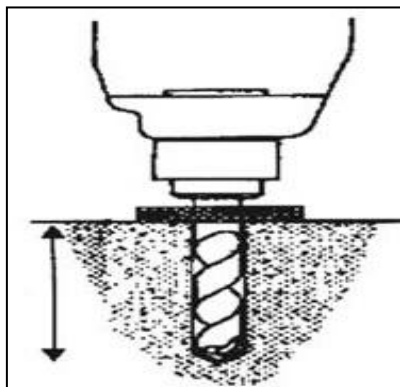
- Turn the selector switch to the "main" position. **(Picture18)**
- press "up" button SB1, lift crossbeam approximately 1000mm.
- press "down" button SB2, verify the safety instruction.
- press "down" button SB2, adjust the safety instruction on the frame of the crossbeam. Then lower the platform.

### Rolling jack adjustment

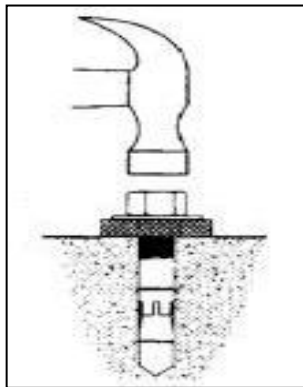
- turn the selector switch to "rolling jack" position.
- press "up" button SB1, lift approximately 300mm.
- press "down" button SB2 and lift the safety rod of rolling jack, lower the rolling jack.
- press "down" button SB2, verify the safety instruction is reliable.

### Anchor bolts installation

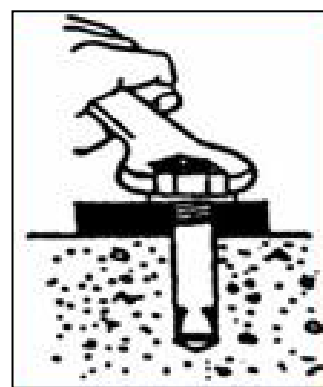
- Fix the anchor bolts with a percussion electric drill (percussion drill bit is of 16), drill to 120mm hole and clean the hole.**(Picture 20)**
- Use light hammer to install the ground bolts into the hole (need not install the central expanded nail of ground bolts, install it after level adjustment.) **(Picture 21)**



Picture 20



Picture 21

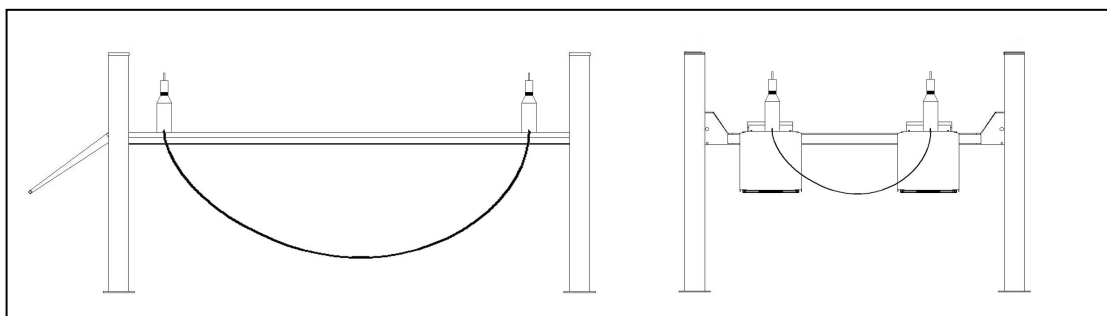


Picture 22

## 7. Adjustment

### Level adjustment (Picture 23)

-adjust the level of the two front turntable and the slide plates on both sides at back with a leveling instrument.



Picture 23

### Insurance level adjustment.

- if the basement without parallel lead to the platform without parallel, adjust the height of the safety rod.
- lift the platform approximately 100mm; press "down" button let the insurance go into the same hole of insurance rod.
- loose the bolts on the bottom of column, observe the horizontal line and adjust the bolts on the insurance strip thread rod
- fix the insurance strip bolts and nuts after level adjustment.
- insert the anchor, use a heavy hammer to install the expansion bolts and screw down the screw cap

### Steel cable adjustment

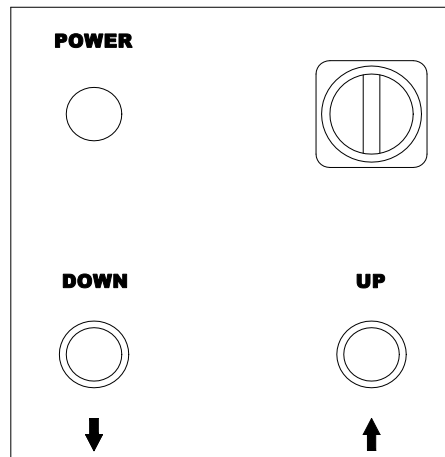
- lift the platform approximately 1000mm.
- observe the horizontal line and adjust the bolts on the steel cable thread rod inside the column.
- fix the steel cable bolts after level adjustment.

## 8. Operation

**Only trained person can operate and check as follows:**

- clear obstacles around before operation.
- during lifting or lowering, no person is allowed to stand near the two sides and beneath the machine, and no person is allowed on the two platform.
- avoid lifting super heavy vehicles or other thing.
- when lifting vehicle, the hand brake lever of the vehicle should be pulled, and the slide resistant triangle woods should be used.
- pay attention to the synchronization of the lifting and lowering. If any thing abnormal is found, stop the machine timely, check and remove the trouble.
- when locking the main machine, the two platforms should be kept at the same height.
- when the equipment has not used for a long time or over night, the machine should be lowered to the lowest position on ground, and remove vehicle, and cut off power supply.

Instructions on electric operation :( see the operation panel **Picture24**)



**Picture 24**

**Lift the main machine:**

- if equipped with electrical carriage, first turn the manual selector on “main machine” position.
- press “up” button SB1, oil pump works, and the platform lift.

**Main machine locking**

- single press “lock” button, the solenoid valve do not work, platform lowers and the lift is locked.

**Main machine lower**

- first click press “up” button SB2 for 2-3s,then pull down the unlocking handle, press “down” button to lower the platform. (**Picture 25**)



**Picture 25**



Only authorized person can operate, doing alignment only after “locking” process.

#### Ordinary rolling jack lifting

-turn the selector switch on “rolling jack” position, clicking “up” button, rolling jack is lift.

Note: the speed of rolling jack is fast, cannot press “up” button continuously.

#### Ordinary rolling jack lowering

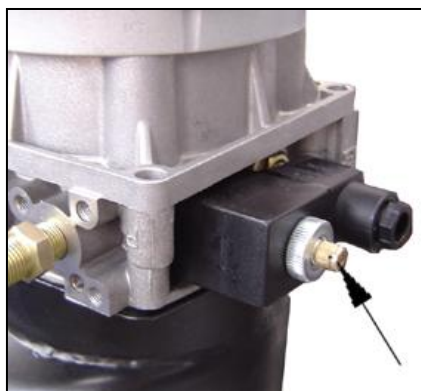
-First lift the rolling jack a little, lift up the insurance of rolling jack, press the “down” button to lower the lift

#### Emergency manual operation for lowering (power failure)



When lowering through manual operation, should observe the condition of platform at any time because there is vehicle on the platform. If there is anything abnormal, screw down oil loop valve immediately.(refer to **Picture 26**)

#### The process of manual operation



Picture 26

## 9.Maintenance and care

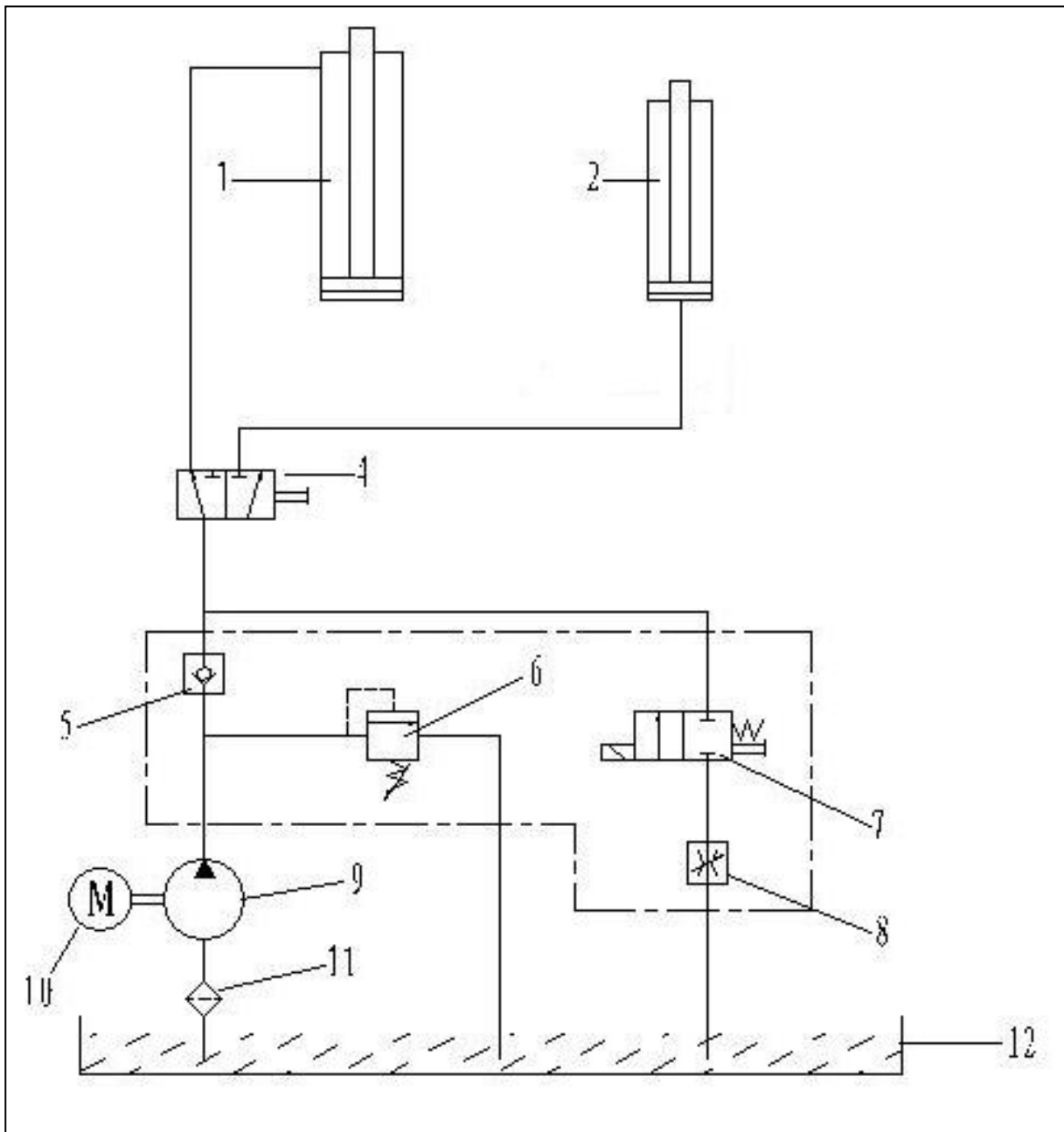
#### The maintenance and care of the lift must be operated by skilled person.

- the upper and lower sliding blocks must be cleared of foreign objects, and must be kept clean and lubricated.
  - all bearings and hinges on this machine must be lubricated once a month
  - the type of F4 of the four-wheel alignment should lubricate yearly.
  - the hydraulic oil must be replaced one time each year. The oil level should always be kept at upper than limit position.
  - check the steel line every three times and if there is something wrong, stop using, and tell the manufacture.
  - the integration of the pneumatic system with an air treatment unit is suggested.
- When change hydraulic oil, put machines to the lowest position, have the oil tank empty, when add new oil, should have the oil cleaned.
- if equipped with rolling jack, check the liability of the switch.

## 10. Trouble shooting table

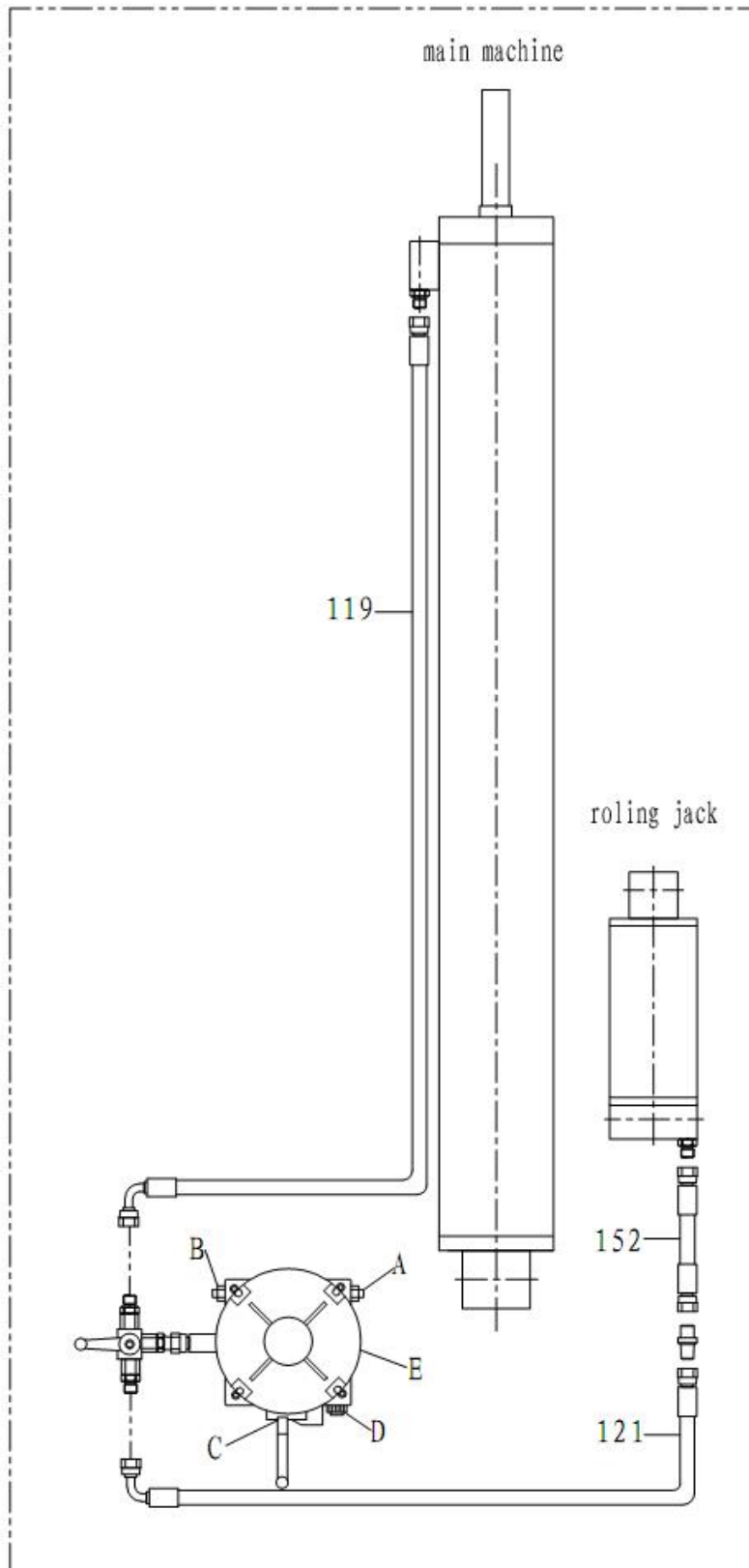
Trouble	Cause and Phenomena	Resolutions
The motor does not run in lifting operation.	① Connection of power supply wires or zero wire is not correct.	Check and correct wire connection.
	② The AC contactor in the circuit of the motor does not pick up.	If the motor operates when forcing the contactor down with an isolation rod, check the control circuit. If the voltage at two ends of the contactor coil is normal, replace the contactor.
In lifting operation, the motor runs, but there is no lifting movement.	① The motor turns reverse.	Change the phases of the power supply wires.
	② It is normal while lifting with light load but abnormal while lifting with heavy load.	The set safe pressure of the over-flow valve may be increased by turning the set knob right ward slightly. The spool of the lowering solenoid valve is stuck by dirt. Clean the spool.
	③ The amount of hydraulic oil is not enough.	Add hydraulic oil.
	④ The "operation stop valve" is not open.	Turn right and open the "Operation stop valve" and supply hydraulic oil to main oil cylinder.
When press "Lower" button, the machine is not lowered.	① The safety pawl are not released form the safety teeth.	First lift a little and then lowering.
	② The safety pawl is not lifted.	The air pressure is not enough or the safety pawl is stuck.
	③ The solenoid air valve does not work.	If the solenoid air valve is energized, but does not open the air loop, check or replace the solenoid air valve.
	④ The lowering solenoid valve is energized but does not work.	Check the plug and coil of the lowering solenoid valve and check the right turn tightness of its end copper nut and so on.
	⑤ The hydraulic oil has too high viscosity or frozen, deteriorated (in Winter).	Replace with 20# hydraulic oil in accordance with the instruction book.
The machine lowers extremely slowly under normal loads.	① The "antiknock valve" for preventing oil pipe burst is blocked.	Remove or close air supply pipe and thus lock the safety pawl of the machine without lifting of the safety pawl. Remove the "antiknock valve" from the oil supply hole at the bottom of the oil cylinder, and clean the "antiknock valve".
	② Oil leakage on oil pipe or at its connections.	Tighten oil pipe connections or replace oil seals and then make-up oil and adjust levelness.
	③ The "oil make-up stop valve" can not be closed tightly and almost make-up oil and adjust every day.	Replace oil make-up stop valve and then make-up oil and adjust.
	④ The base or the machine is twisted.	Adjust again the levelness of the machine, and fill or pad the base.

## 11. Hydraulic pressure elements diagram



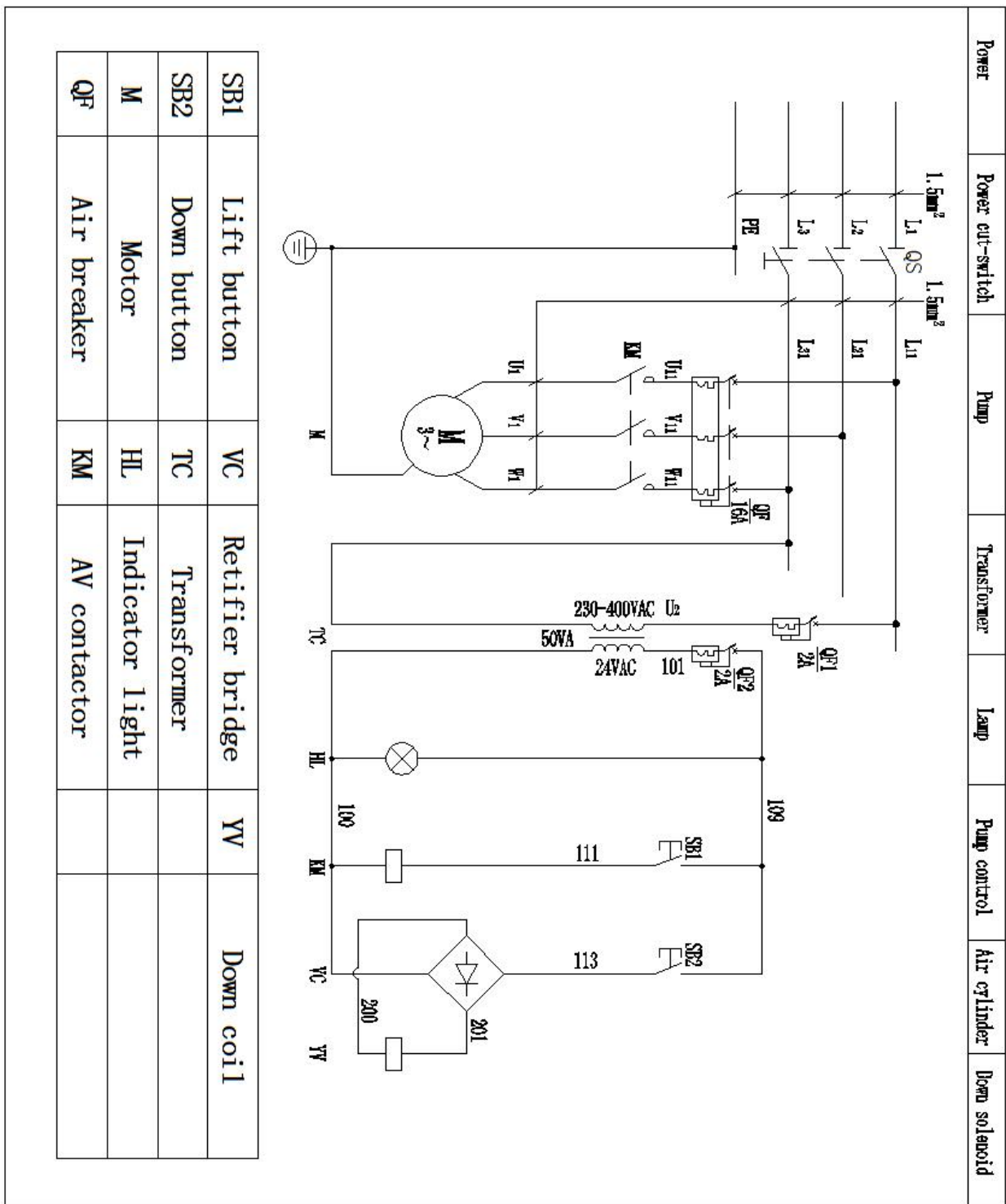
- 1.main platform
- 2.rolling jack
- 4.selector valve
- 5.one-way valve
- 6.overflowing valve
- 7.descent valve
- 8.throttling valve
- 9.gear pump
- 10.pump motor
- 11.filter
- 12.oil tank

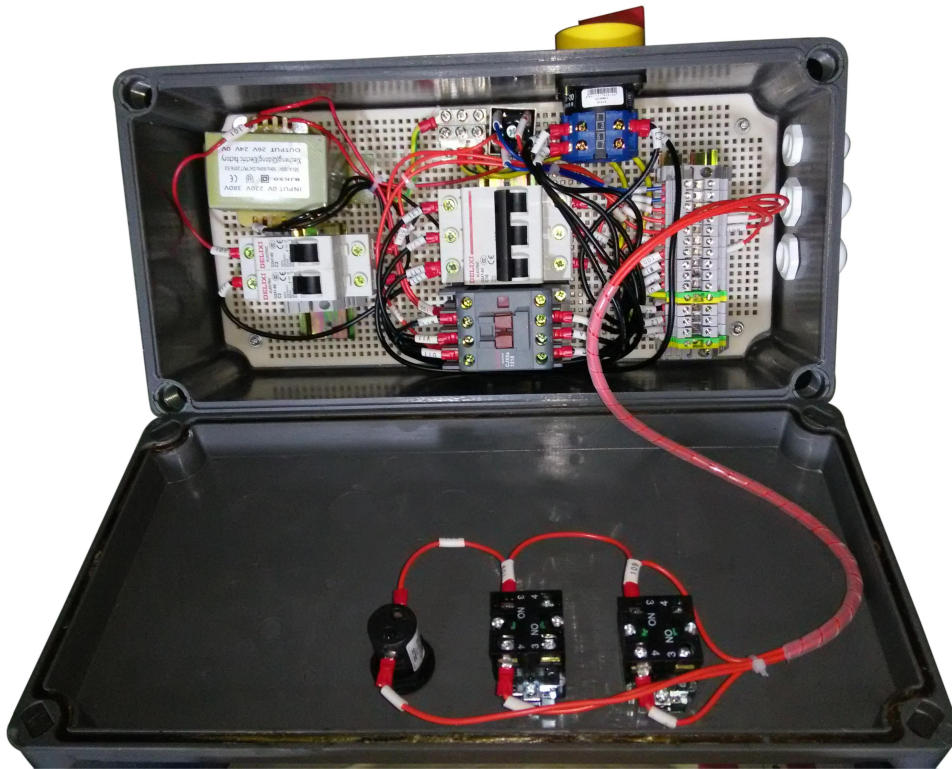
## 12. Oil hose connection diagram



1. 119#~152# High pressure pipe
2. A: Over flow valve; B: Plug; C: Manual lowering valve and handle; D: One-way valve; E: Motor

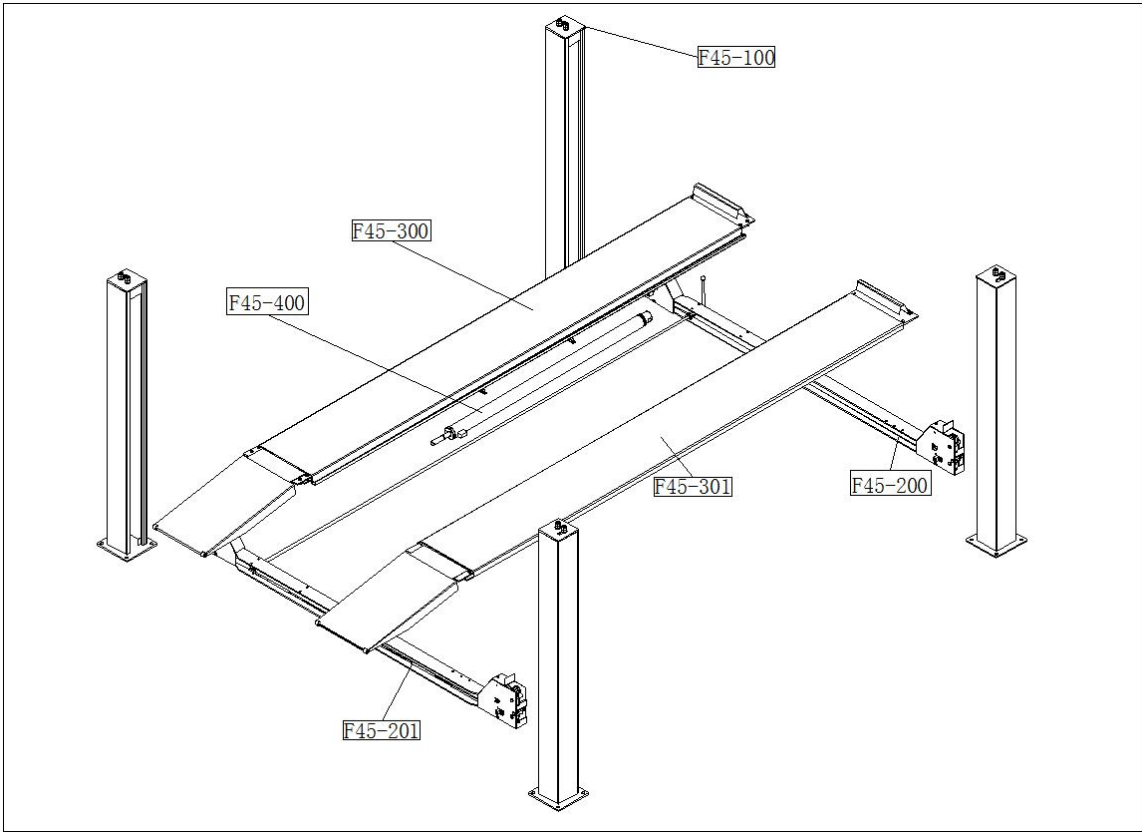
### 13. Circuit drawing



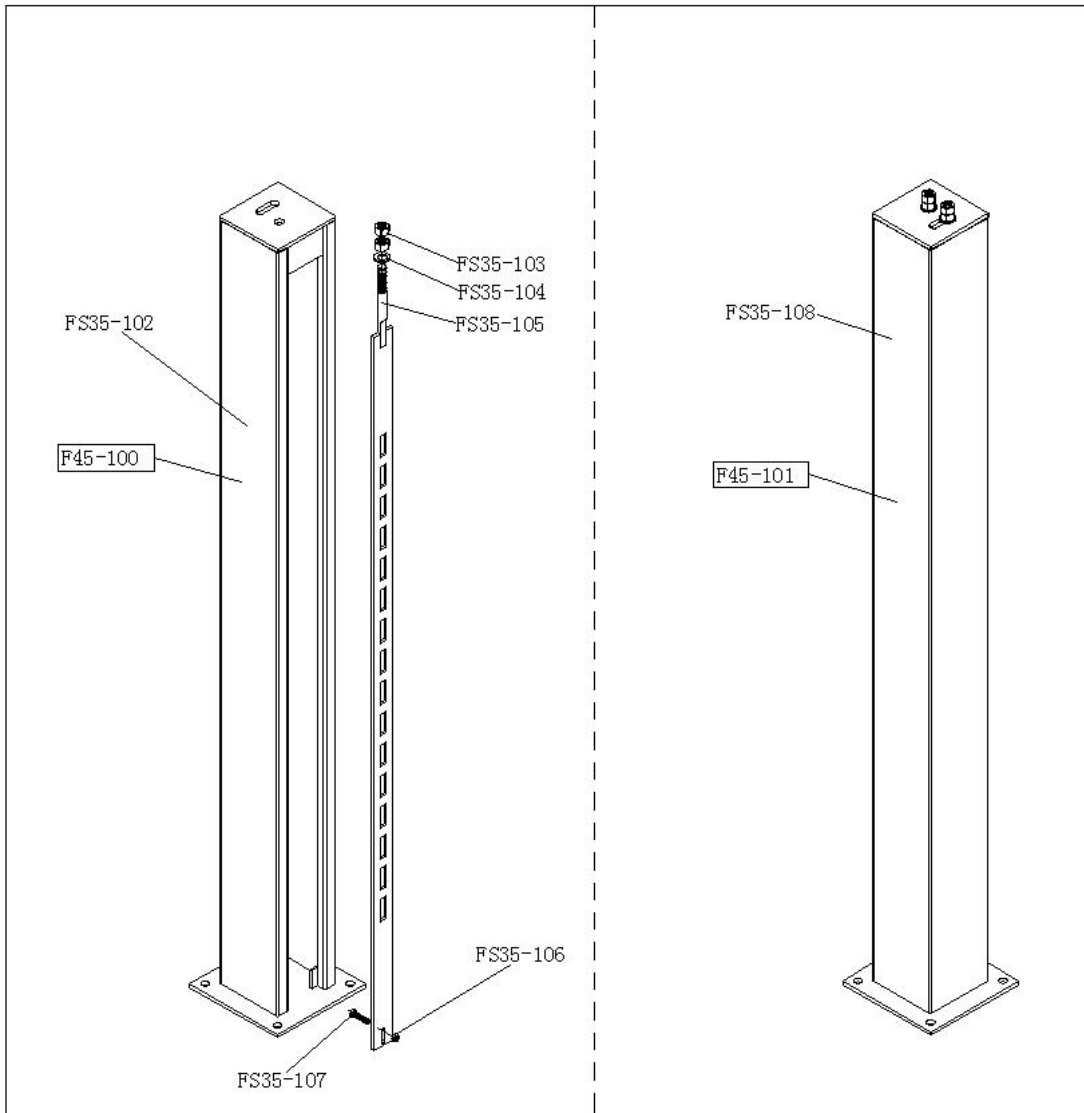


D35-1001	Transformer
D35-1003	AC contactor
D35-1004	Circuit breaker
D35-1007	Power switch

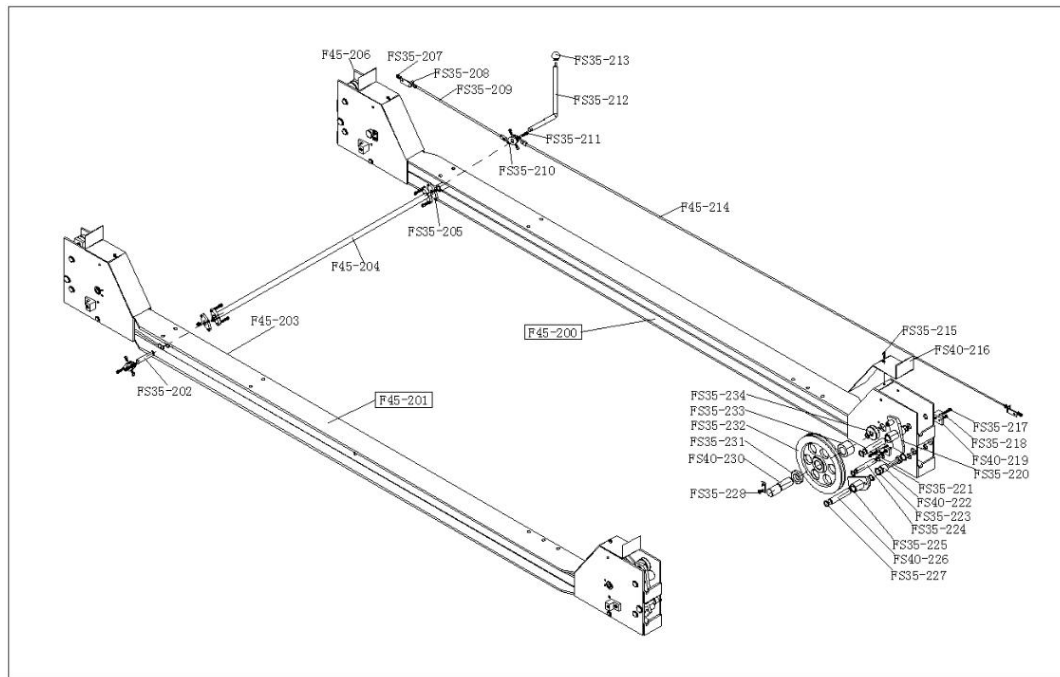
### 14. Explosion drawing



F45-100	Complete column 1 assembly
F45-200	Crossbeam 1 assembly
F45-201	Crossbeam 2 assembly
F45-300	Platform 1 assembly
F45-301	Platform 2 assembly
F45-400	Oil cylinder assembly

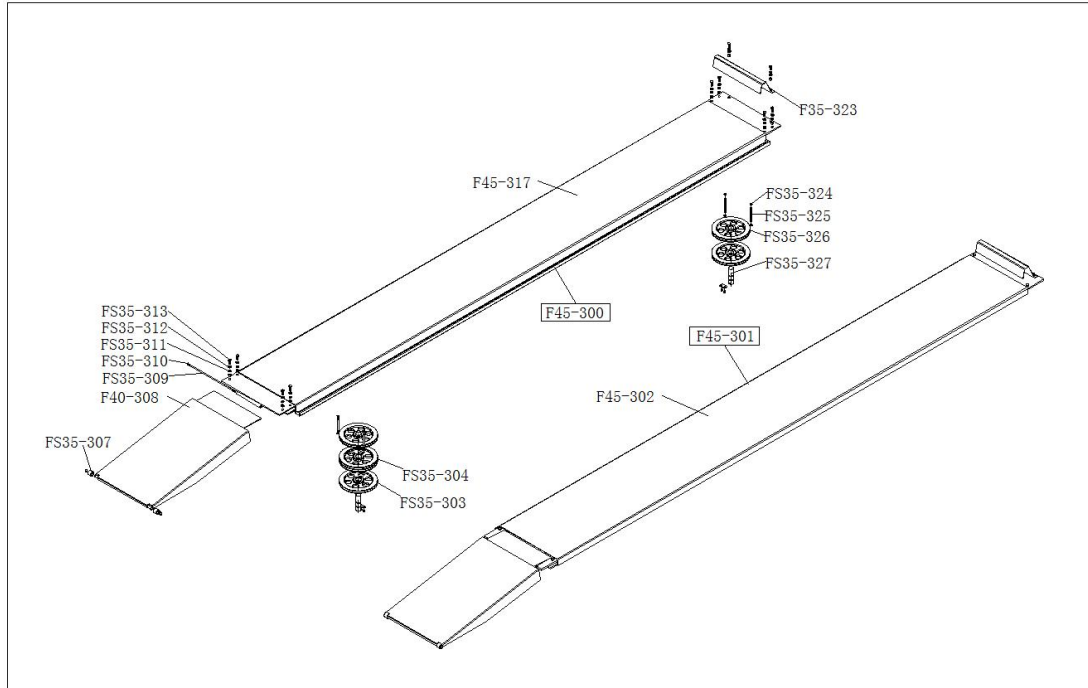


FS35-102	ZZ-304-010000-Z	column
FS35-103	B-004-200001-1	hex nut M20
FS35-104	B-040-223730-1	flat washer
FS35-105	ZZ-304-110000-Z	insurance strip
FS35-106	B-004-100001-1	hex nut M10
FS35-107	B-009-001030-3	Cup head square neck bolts M10X30
FS35-108	ZZ-304-010000-Z	column 2



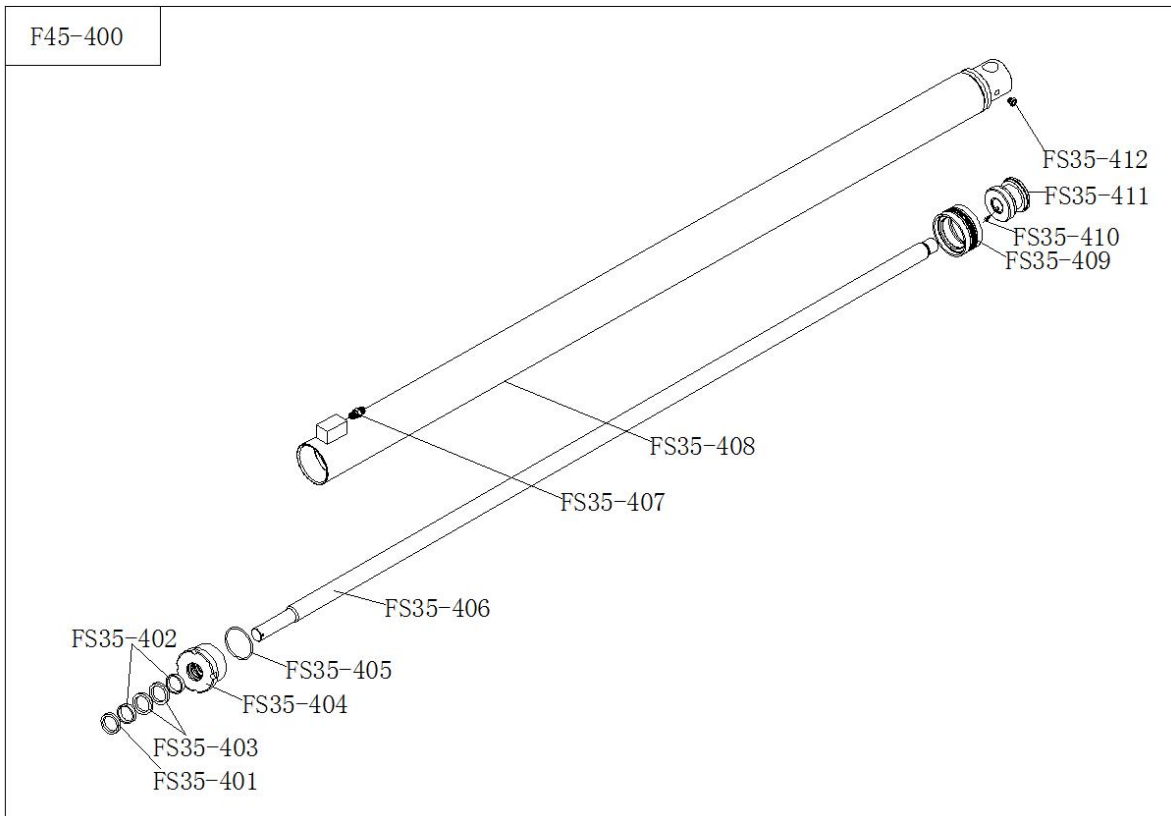
FS35-202	ZX-304-002500-0	drive shaft
F45-203	ZZ-304-020000-Z	crossbeam2
F45-204		drive rod
FS35-205	ZX-304-002400-0	Ring flange(holes)
F45-206	ZZ-304-020000-Z	crossbeam1
FS35-207	B-004-060001-1	hex nut M6
FS35-208	ZX-304-003000-0	Connecting rod support
FS35-209	ZZ-304-130000-Z	short pull rod
FS35-210	ZX-304-002600-0	Ring flange(grooved)
FS35-211	B-010-060201-0	hex socket head cap screw M6X20
FS35-212	ZX-304-002700-0	drive handle
FS35-213	S-410-008032-0	handle ball
F45-214		long pull rod
FS35-215	B-010-060121-0	hex socket head cap screw M6X12
FS40-216		crossbeam protective plate
FS35-217	B-010-060301-0	hex socket head cap screw M6X30
FS35-218	B-017-060161-0	cross sunk head screw M6X18
FS40-219		Limit gommures
FS35-220	ZX-304-090000-Z	Upper insurance block
FS35-221	B-055-160001-0	shaft snap ring $\varnothing 16$
FS40-222		Limit shaft of insurance strip
FS35-223	B-055-240001-0	shaft snap ring $\varnothing 24$
FS35-224	ZX-304-004200-0	Limit shaft of crossbeam steel cable $\phi 16 \times 100 \text{mm}$
FS35-225	ZX-304-100000-Z	downward insurance block
FS40-226		Insurance block stationary shaft
FS35-227	B-055-200001-0	shaft snap ring $\varnothing 20$

FS35-228	B-017-080121-0	cross countersunk head screw M8X12
FS40-230	ZX-304-000700-0	Guide pulley stationary shaft
FS35-231	ZZ-304-000100-0	Rubber mat (thin)
FS35-232	ZG-304-003600-0	Steel cable pulley (single groove) 1
FS35-233	ZZ-304-000200-0	Rubber mat (thick)
FS35-234	ZX-304-002100-0	Upper insurance block pulley

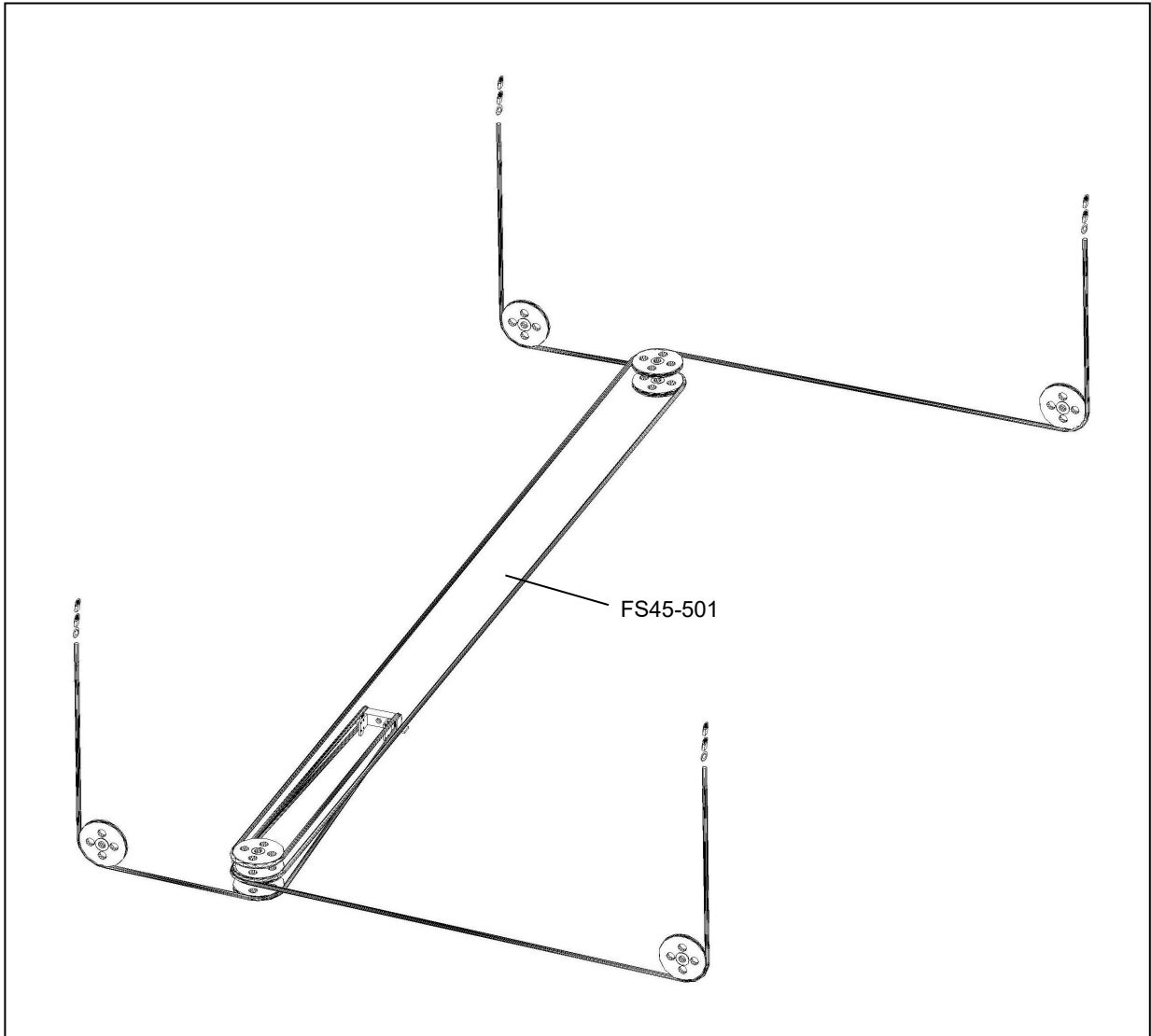


F45-302		platform 2
FS35-303	ZG-304-003400-0	Steel cable pulley (single groove) 2 $\varnothing$ 230X21
FS35-304	ZG-304-000037-0	Steel cable pulley (double groove) 2 $\varnothing$ 230X34
FS35-305		Thread rod
FS35-306	S-011-000011-3	spring $\phi$ 1.2* $\phi$ 12*60
FS35-307	DG-3B4-001500-0	loading dock board roller
F40-308		loading dock board
FS35-309	ZX-304-004100-0	loading dock board stationary shaft $\varnothing$ 10
FS35-310	B-055-100001-0	shaft snap ring $\varnothing$ 10
FS35-311	B-040-132425-1	flat washer $\varnothing$ 12
FS35-312	B-050-120000-0	spring washer $\varnothing$ 12
FS35-313	B-014-100251-1	hex bolt M10X25
FS35-314	ZZ-304-003100-0	side sliding plate roller
FS35-315	B-010-060351-1	hex socket head cap screw M6X35(half teeth)
FS35-316	ZZ-304-050000-Z	side sliding plate
FS35-317	ZZ-304-030000-Z	platform 1
FS35-318	ZZ-304-060000-Z	Big cover plate 502x465x58mm
FS35-319	ZZ-304-070000-Z	Small cover plate 502x210x48mm
FS35-320	B-014-100201-1	hex bolt M10X20

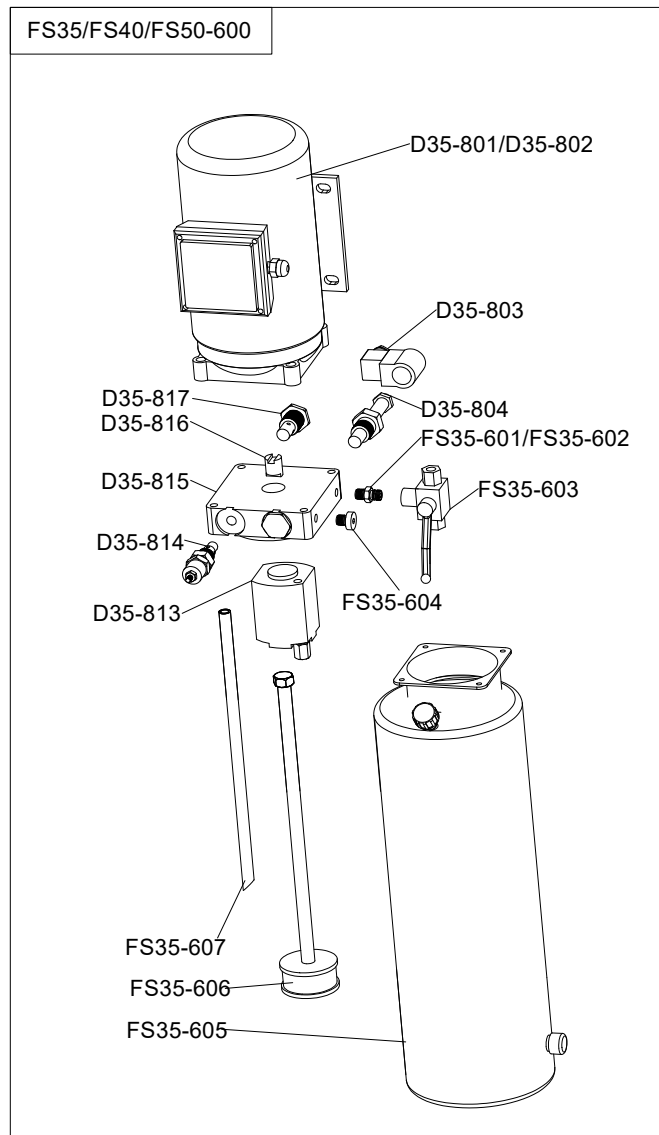
FS35-321	B-050-100000-0	spring washer Ø10
FS35-322	B-040-112020-1	flat washer Ø10
F35-323	ZZ-304-002300-0	block car plate
FS35-324	B-055-120001-0	shaft snap ring Ø12
FS35-325	ZX-304-001200-0	steel cable limit shaft Ø12
FS35-326	ZG-304-003500-0	Steel cable pulley (single groove) 3
FS35-327	ZX-304-001400-0	Guide pulley stationary shaft



FS35-401	S-005-040065-0	dust-proof ring Ø32X40X6.5
FS35-402	S-045-008025-0	wear ring
FS35-403	S-006-042006-0	U-ring Ø32X42X6
FS35-404	ZZ-304-160300-0	oil cylinder cover
FS35-405	S-000-070004-0	O-ring Ø70X4
FS35-406	ZZ-304-160200-1	piston rod
FS35-407	S-011-010400-10	oil cylinder union
FS35-408	ZZ-304-160100-Z	oil cylinder
FS35-409	S-007-055224-0	combined seal ring Ø70X50X22.4
FS35-410	B-007-060101-0	hex socket head cap screw M6X10
FS35-411	ZZ-304-160100-0	piston
FS35-412	S-023-010800-0	muffler G1/8



F45-500		steel cable complete
FS45-501	S-300-093000-1	steel cable



FS35-600	Complete power unit assembly
D35-801	motor
D35-816	annectent spindle
D35-815	valve seat
D35-814	overflow valve
FS35-604	plug
D35-817	one-way valve
D35-813	gear pump
FS35-605	oil tank(12L)
FS35-606	extraction oil hose
FS35-607	escape oil hose
D35-803	coil
D35-804	lowering valve
FS35-603	transform valve
FS35-601	hose fitting