



Hammerhead

71.100.CW

CAR WASH MACHINE



Jimmy Industrial Pty Ltd
5 Cord St
Dudley Park, 5008
Ph: (08) 8269 9700
W: www.jimmytools.com.au
E: sales@jimmytools.com.au



Read this entire manual carefully and completely before installation or operation

This manual contains all the essential warning information, advice, operating instructions, and basic machine maintenance for the self-service car wash machine. It is recommended to keep this user manual together with the purchase invoice.

Additionally, we suggest writing the purchase invoice number here:

Store this user manual in a safe, dry place for future reference and use

Contents

Important Safety Warnings for Equipment Operation - Safety Measures	2
Safety Measures for the Product	2
Packaging	3
Equipment Features	4
Working Environment and Equipment Parameters	4
Working Environment:	4
Technical Parameters:	4
Product Appearance Overview	6
Operating Instructions.....	6
Operational Preparation	6
Function Interface Introduction.....	7
Computer board key operation.....	8
Operating Modes.....	9
Operation Process.....	10
Daily maintenance	10
1. Consumables replenishment.....	10
2.Maintenance of water inlet filter valve	11
3.Maintenance and servicing of high-pressure pump	12
4.Dust removal of vacuum cleaner.....	13
5.Cleaning of foam liquid throttle valve	14
6.Cleaning of water gun nozzle.....	14
7.Cleaning of coating gun.	15
8.Maintenance of air compressor.....	15

Important Safety Warnings for Equipment Operation - Safety Measures



Note: It is recommended to carefully read this instruction manual when using this equipment for the first time. To minimize personal injury and equipment damage during machine operation, always adhere to basic safety operation guidelines.

1. **Keep the workplace clean and tidy:** A messy workplace may lead to accidents.
2. **Pay attention to the working environment of the machine:** Ensure there is adequate lighting when using this equipment, and use appropriate lighting fixtures if necessary. Do not use the equipment in the presence of flammable liquids or gases.
3. **No children in the equipment's working area:** Ensure that no children are present in the machine's working area. Do not allow children to play with the equipment or related tools, electrical wires, or pipes.
4. **Store unused cleaning fluids or tools in a suitable place.** Unused tools should be kept in a dry location with corrosion protection. Ensure that cleaning fluids and tools are kept away from children to prevent them from playing with them.
5. **Do not use this equipment for purposes other than its intended use.** Do not modify the equipment's configuration for other purposes.
6. **Take care to protect your eyes and ears during operation.** When working in a dusty or chemically volatile environment, use dust masks or protective masks according to ANSI standards.
7. **Use appropriate tools,** regularly inspect wires and pipes, and ensure they are clean.
8. **Maintenance precautions:** When conducting equipment maintenance, adhere to basic maintenance rules. Do not perform equipment maintenance when the maintenance personnel are excessively fatigued.
9. **Ensure there are no potential component damages before using the machine.** Check vulnerable parts or moving components before using the equipment to ensure they are in proper working order. In case of machine malfunctions, consult a professional technician for equipment inspection.
10. **Accessories and attachments:** When conducting equipment inspections, only use standard and original parts. After the warranty period expires, if non-original parts are used, it is advisable to use parts with similar dimensions and specifications as the original parts. Consult the manufacturer or authorized dealer for guidance.
11. **Maintenance:** Following the principles of safe operation, this equipment should be regularly maintained by professional technicians.
12. **Warning for individuals with pacemakers:** Operators with pacemakers must consult a doctor before using this equipment to prevent accidents.

Safety Measures for the Product



Note: This equipment must be installed by qualified operators with appropriate training. Before installation, it is essential to read and understand the relevant safety warnings.

1. **Use this equipment in well-ventilated areas.**
2. **In case of equipment leakage, immediately shut down the equipment. After confirming and rectifying the leakage issue, the equipment can be used again.**
3. **There should be a fire extinguisher nearby the equipment to control accidental fires.**
4. **Ensure that cleaning fluids do not come into direct contact with the eyes and skin.**
5. **The power supply for this machine is: AC220V 50Hz 1Ph. Pay attention to electrical safety and use a power source with a grounding line.**
6. **Adjust the foam gun spraying effect manually as needed before starting operations.**
7. **If you encounter machine malfunctions or other issues during use, promptly contact the supplier or manufacturer. Unauthorized disassembly of the machine is strictly prohibited.**

8. The car wash machine's power supply must meet the load requirements.
9. During the ozone disinfection process, close the car windows. After ozone disinfection is complete, ensure the vehicle is ventilated for at least half an hour.
10. Do not place any items inside the electrical cabinet, and only allow professionals to access and operate the electrical cabinet.
11. Regular maintenance is required (recommended weekly) for draining the air compressor (the drain valve is located at the bottom of the air compressor).



Note: The warning information and precautions included in this operating manual do not cover all possible unexpected conditions or situations. Operators must understand that common sense and cautious operation are two factors for safely operating the equipment. They are responsibilities that operators must fulfill.

Packaging



Note: When unpacking, ensure the following items are included. If any accessories are damaged or missing, please contact your local dealer.

Package Contents (Please refer to the model configuration table for verification):

No.	Item	Specification	Unit	Qty.	Remark
1.	Car Wash Machine		unit	1	
2.	High-Pressure Water Gun		unit	1	
3.	High-Pressure Water Hose	10m	unit	1	
4.	Foam Hose	10m	unit	1	
5.	Inflation Hose	10m	unit	1	
6.	Coating Hose	10m	unit	1	
7.	Dust Suction Hose	7m	unit	1	
8.	Pipe Rack		unit	1	
9.	Ion Purification Hose	10m	unit	1	
10.	Hand Wash Basin		unit	1	
11.	Faucet		unit	1	



Note: Before unpacking and using the machine, please check if the machine or its components are loose or have fallen off.

Different machine models have different feature configurations. Refer to the parameter table for the accessories of the purchased model to confirm the actual contents received.

Equipment Features

Our company's self-service car wash machine is the first in the country to achieve ideal washing results with the lowest detergent consumption and minimal water usage. Users have the freedom to choose the car washing process according to their preferences.

1. The equipment is equipped with a double-layer digital display screen, which is simple to operate, convenient and practical.
2. No need to open the equipment for inspection; equipment malfunctions are clearly indicated through alarm prompts.
3. Electrical Safety: Strong and weak currents are separated, and the equipment's signal switch and indicator lights use a safe 12V voltage.
4. High water resistance: It is resistant to rain and wind, preventing water ingress.
5. User-Friendly Design: The control panel is ergonomically tilted, making operation effortless.
6. Clear labeling for detergent container ratios, facilitating routine maintenance.
7. The water storage tank features an overflow circuit, eliminating potential risks caused by the failure of the water inlet device.
8. Key controllers are sourced from reputable domestic or international manufacturers.
9. Light indicators for low detergent levels prompt refilling.

Working Environment and Equipment Parameters

Working Environment:

Ambient Temperature: 0°C - +60°C

Relative Humidity: < 95% RH

Note: This machine comes with an LOT card valid for about one year. Due to different factory debugging times, the valid period of the LOT card may be less than one year. Subject to the actual receipt.



After the due day of the LOT card of the car washing machine, the operator needs to recharge and purchase traffic by himself. For specific steps, refer to the LOT card recharge instructions.



After one month of expiration, the LOT card may become invalid and cannot be used. At this time, you can purchase an LOT card by yourself and insert it into the device for use.

Technical Parameters :

Model		71.100.CW
Standard	Foam Spraying	✓
	High-Pressure Water Jet	✓
	Interior Vacuuming	✓
	Sink	✓
	Patented Foam System Nozzles	✓
	Low Foam Solution Warning	✓
	Low Tank Water Warning	✓

Optional	Coating	✓
	Ozone Disinfection	✓
	Negative Ion Purification	✓
	Tyre Inflation	✓
Parameters	Rated Voltage	AC220V 50Hz 1ph
	Display Screen	1.5-inch double-layer digital display screen
	Inflation Pressure (for Compact Car)	≤0.5MPa
	Vacuum Cleaner Power	1.8kW
	High-Pressure Water Pressure	11MPa
	High-Pressure Hose Length	10m
	Foam Hose Length	10m
	Coating Hose Length	10m
	Inflation Hose Length	10m
	Ozone Disinfection and Negative Ion Purification	10m
	Cleaning Solution Tank Capacity	40L
	Clean Water Tank Capacity	40L
	Coating Solution Tank Capacity	15L
	Ozone Generator Output	5g/h
	Net Weight	241kg
	Machine Dimensions	1220x850x2060mm
Packaging Dimensions	920x780x1830mm(Packaging 1) 1000x880x210mm(Packaging 2)	

Product Appearance Overview

	1.	Water Tap
	2.	Inlet water filter
	3.	Ozone disinfection tubes
	4.	Hand Wash Basin
	5.	Drainage Hose
	6.	Inflation Hose
	7.	Lock
8.	Coating gun	
9.	Foam gun	
10.	High-pressure guns	
11.	Vacuum pipe storage box	
12.	Cabinet Door	
13.	Control Panel	
14.	Rain caps	

Operating Instructions

Operational Preparation



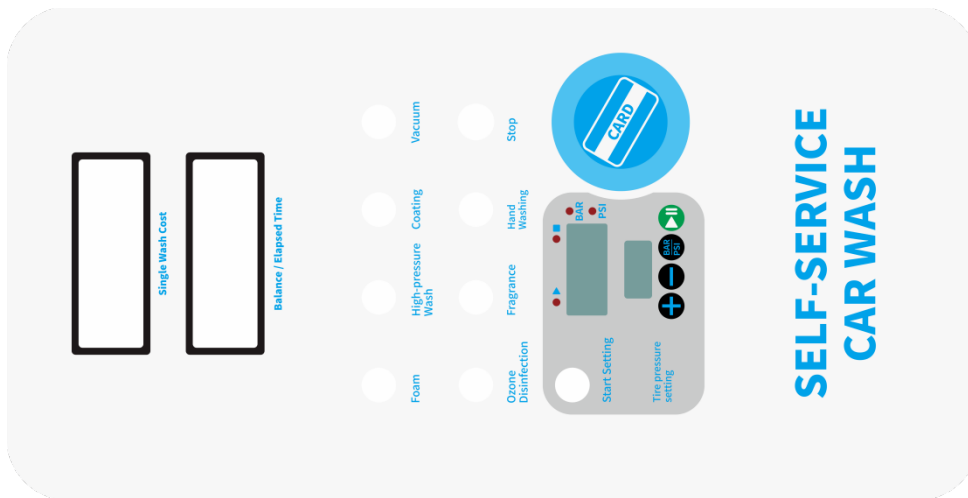
Warning: After all installation work is completed, ensure that the equipment is reliably connected to a grounded power source.

1. Move the machine to the vicinity of the installation location. Use the key to open the machine panel, remove the relevant loose parts, and connect the parts to the machine according to the labels' prompts. (If you have any questions, please contact the product's after-sales service department.)
2. Move the machine to the installation location, simulate the relevant functions, ensure the rationality of the installation location, and fasten the machine with ground anchor bolts on the corresponding positions on both sides of the machine using a special bracket.
3. It is recommended to use thread sealant on the water inlet threads to facilitate cleaning of the filter screen in the future. The water source will be automatically cut off when the water tank is full. (Before leaving the factory, the water inlet valve of the car wash machine is in the open state.)
4. The high-pressure hose has sealing structures at both ends, so no further treatment is required during assembly.
5. To prevent theft, it is recommended to use thread sealant on the foam liquid outlet threads.
6. Pour the car washing detergent into the foam liquid tank first, and then add an appropriate amount of water.

(Refer to the foam liquid tank instructions for specific operating methods.)

7. Remove the fixed bracket, take the coating liquid tank from the equipment, pour in the appropriate amount of coating liquid, and restore it. (Close the relevant valves before removal.)
8. For any other unclear matters, please contact the dealer or the manufacturer's after-sales service promptly.

Function Interface Introduction



Foam Spraying: Removes oil and dirt from the car's body and applies a layer of water wax to it. To use, simply spray foam to cover the entire car body.

High-Pressure Washing: Cleans away the oil and dirt dissolved by the foam. This car wash machine has a feature to stop the gun and pump, which stops billing. It is prohibited to directly wash the fins of the radiator (high pressure can deform the fins).

Interior Vacuuming: To reduce vacuuming time, it is recommended to remove removable floor mats outside the car to remove most of the dust before cleaning the interior.

Tyre Inflation: When the preset value is reached, inflation stops automatically, or if it detects tyre pressure higher than the set value, it will automatically reduce the pressure in the tyres.

Ozone Disinfection: It is recommended to disinfect the interior with ozone before washing the car, and the ozone production time should be around 30 seconds. After washing the car, the car windows must be kept open for half an hour.

Negative Ion Purification: Similar to ozone, it also has a disinfection effect. Since negative ions are beneficial to human health, the purification time can be freely controlled based on your needs.

Coating: It is ideal to apply body coating to a clean and dry car body.

Hand Washing: After completing all car washing tasks, it is recommended to do a simple personal cleaning. It can be used for hand washing or cleaning other items.

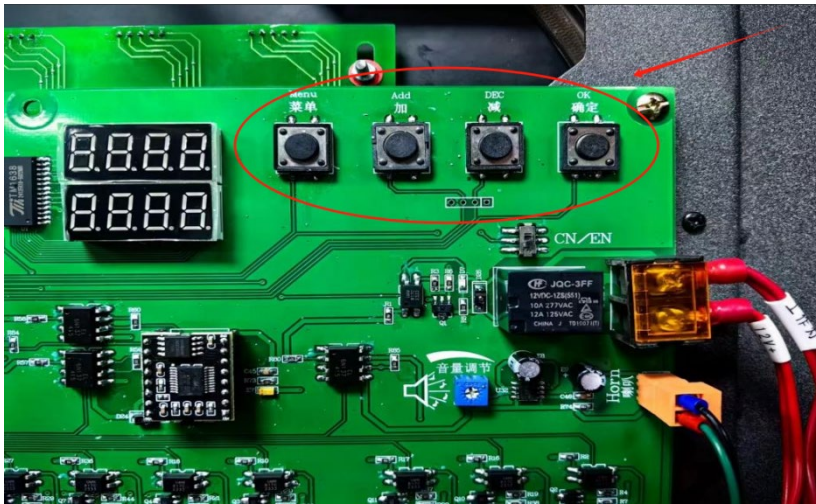
STOP: Pauses the currently running equipment function and billing.

CARD: Swipe the IC card to sense the card area, start the equipment, and swipe the IC card again at the time of settlement. If you want to wash the again after settlement, you need to swipe the IC card again.



Note: When operating the foam spraying, the Foam Power, Foam Concentrate, and Compressed Air indicators must be on.

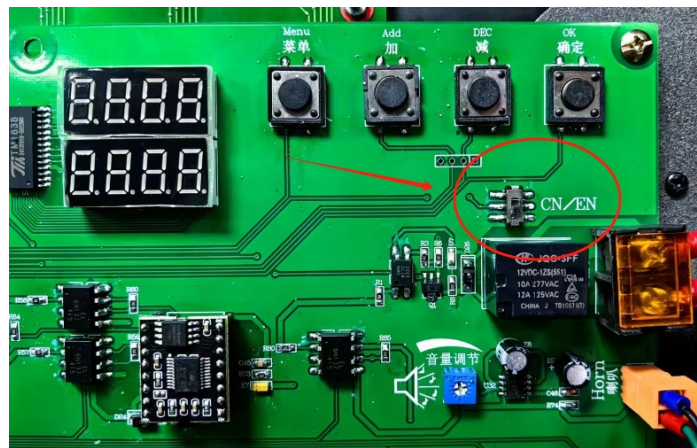
Computer board key operation



Note: Enter the system Settings. Do not change them unless necessary.

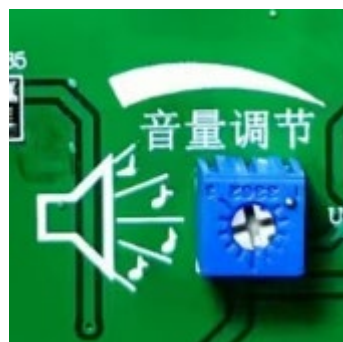
1. Car wash time and amount set:
Press "Menu" to select channels F1 to F13, corresponding to the display on the left
 - 1.1. F1 channel: This channel is to set the coefficient value of car washing amount, and the same consumption amount corresponds to different car washing time. F2-F13 is used to set the car washing time of different channels, that is, the consumption standard. Click "Menu" to select F1 channel, click "OK", adjust the amount coefficient on the "+" and "-" buttons, and click "OK" to save the setting parameters after adjustment
 - 1.2. F2 channel: This channel is used for the clean Water function. The default time is seconds. Click "Menu" to select F2 channel, click "OK", adjust the use time on the "+" and "-" buttons, and click "OK" to save the setting parameters after adjustment
 - 1.3. F3 channel: This channel is used to set the "foam function" time, the default is seconds. Click "Menu" to select F3 channel, click "OK", adjust the use time on the "+" and "-" buttons, and click "OK" to save the setting parameters after adjustment
 - 1.4. F4 channel: This channel is used to set the "vacuum function" time, the default is seconds. Click "Menu" to select F4 channel, click "OK", adjust the use time on the "+" and "-" buttons, and click "OK" to save the setting parameters after adjustment
 - 1.5. F5 channel: This channel is used to set the time for washing hands. The default time is seconds. Click "Menu" to select F5 channel, click "OK", adjust the use time on the "+" and "-" buttons, and click "OK" to save the setting parameters after adjustment
 - 1.6. F6 channel: This channel is used to set the Ozone Function time. The default value is seconds. Click "Menu" to select F6 channel, click "OK", adjust the use time on the "+" and "-" buttons, and click "OK" to save the setting parameters after adjustment
 - 1.7. F7 channel: This channel is used to set the "Coating function" time, the default is seconds. Click "Menu" to select F7 channel, click "OK", adjust the use time on the "+" and "-" buttons, and click "OK" to save the setting parameters after adjustment
 - 1.8. F8 channel: This channel is used to set the "inflation function" time, the default is seconds. Click "Menu" to select F8 channel, click "OK", and adjust the use time on the "+" and "-" buttons. After the adjustment, click "OK" to save the setting parameters
 - 1.9. F9 channel: This channel is used to set the "negative ion function" time, which is considered as seconds. Click "Menu" to select F9 channel, click "OK", adjust the use time on the "+" and "-" buttons, and click "OK" to save the setting parameters after adjustment

- 1.10. F10 channel: This channel is used to set the use time of "Xiangfen Function", which is considered as seconds. Click "Menu" to select F10 channel, click "OK", adjust the use time on the "+" and "-" buttons, and click "OK" to save the setting parameters after adjustment
 - 1.11. F11 channel: This channel sets the amount represented by the coin meter pulse. Click "Menu" to select F11 channel, click "OK", adjust on the buttons of "+" and "-", and click "OK" to save the setting parameters after adjustment
 - 1.12. F12 channel: Set the pause time of each car wash (if the car wash machine is not used beyond the set time of the channel, the system will automatically end the car wash and return the balance), which is considered as minutes. Click "Menu" to select F12 channel, click "OK", and adjust the duration on the "+" and "-" buttons. After the adjustment, click "OK" to save the setting parameters
 - 1.13. F13 channel: Set the automatic car wash time each time (when the car wash machine exceeds the maximum car wash time set in the channel, the system will automatically end the car wash and return the balance), which is considered minutes. Click "Menu" to select F13 channel, click "OK", and adjust the duration on the "+" and "-" buttons. After the adjustment, click "OK" to save the setting parameters.
2. English and Chinese voice broadcast options:



The icon button is a voice switch button
Dial up for Chinese, dial down for English

3. Broadcast volume adjustment:



The figure shows the volume adjustment button. According to the working environment, the volume of the broadcast voice of the car washing machine is adjusted.

Operating Modes

Interior Vacuuming → Foam Spraying → High-Pressure Washing → Hand Washing (Simple Mode)
 Interior Vacuuming → Foam Spraying → High-Pressure Washing → Body Coating → Hand Washing
 Interior Vacuuming → Negative Ion Purification → Foam Spraying → High-Pressure Washing → Body

Coating → Hand Washing

Interior Vacuuming → Ozone Disinfection → Foam Spraying → High-Pressure Washing → Body Coating
→ Hand Washing

Interior Vacuuming → Ozone Disinfection → Negative Ion Purification → Foam Spraying → High-Pressure
Washing → Body Coating → Hand Washing

Operation Process

Step1:

Swipe the card : Please bring the car wash card close to the sensing area to start the equipment. The display interface enters the working state, and operate as needed.

Step 2: Select the function according to your needs. (Different models have different function configurations. For the functions of the purchased model, refer to the parameter table. Subject to the actual receipt.)

1. Press the clean water button and then take the clean water gun to clean the car body. After finishing, press the clean water button to pause. (During wash the car body, keep the distance between the water gun and the car body at 10-20 cm.)

2. Press the foam key and then take the foam gun to spray foam. After finishing, press the foam key to pause. (When spraying water and foam, starting from the roof can cover the whole car faster.)

3. Press the clean water key and then rinse off the foam. After finishing, press the clean water key to pause and dry the car body with a towel. (When rinsing off the foam, first rinse the top of the car body and rinse along the body gaps from top to bottom.) (When scrubbing the car body, pay attention to using a clean mop or towel to avoid damaging the car.)

4. Press the vacuum key and then take the vacuum head to vacuum the inside of the car. After finishing, press the vacuum key to pause. (When vacuuming, do not suck large garbage to avoid clogging the vacuum cleaner.) (“Vacuuming” function is charged by time. Please pause in time when not in use to avoid waste.)

5. Take the disinfection tube and put it into the car through the window. Close the window as much as possible and start the engine and turn on the air conditioning internal circulation. Press the disinfection key and wait for 3 to 5 minutes. After finishing, press the disinfection key to pause. (After ozone disinfection is completed, the interior of the car must be ventilated for more than half an hour.)

6. Press the hand washing key and then you can turn on the faucet to clean the tools. After finishing, press the hand washing key to pause. (“Hand washing” function is charged by time. Please pause in time when not in use to avoid waste.)

7. Press the coating key and then take the coating gun to spray around the car body. After that, press the coating key to pause. Use a wet towel to evenly apply the coating agent on the surface of the car body. Pay attention to avoid overlapping application. Then rinse it clean with clean water.

After washing the car, please put the tools back in place to avoid affecting the entry and exit of vehicles.

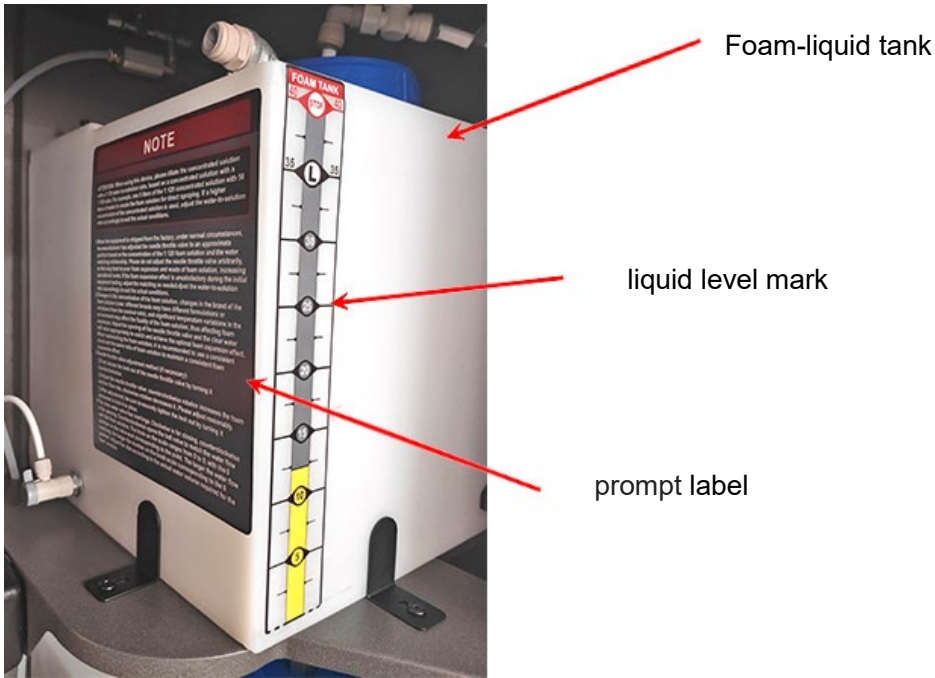
Step 3:

Swipe the card : After the car washing operation is completed, bring the car wash card near the sensing area again to return the balance to the car wash card.

Daily maintenance

1. Consumables replenishment

1.1 Foam liquid replenishment: When the low-level indicator light of foam liquid is on, refer to the prompt label of the foam liquid tank and replenish foam liquid.



Foam-liquid tank

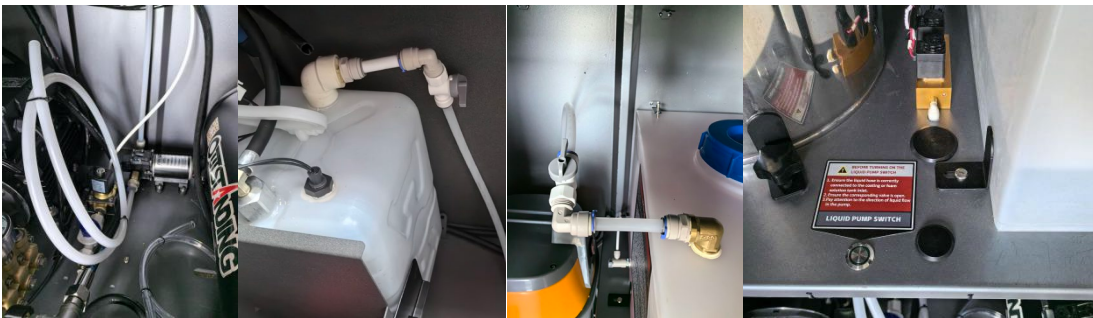
liquid level mark

prompt label

1.2 Water liquid replenishment: When the water storage tank low liquid level indicator light is on, wait for automatic water replenishment before use.

1.3 Coating liquid replenishment: When the low-level indicator light of coating liquid is on, replenish the coating liquid into the coating tank in time before use.

Method for adding coating liquid/foam liquid with transfer pump: Correctly connect the pipeline of the transfer pump to the coating box/foam box. Turn on the corresponding connection switch of the coating box/foam box. Insert the pipeline at the other end of the transfer pump into the coating liquid/foam liquid to be added. Click the transfer pump switch to extract the liquid into the coating box/foam box. Click the transfer pump switch again to stop adding coating liquid/foam liquid. (To avoid mixing, the pipeline of the transfer pump assembly needs to be flushed before adding different kinds of liquids.)

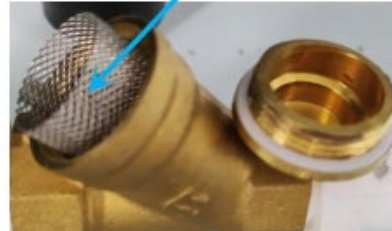


2.Maintenance of water inlet filter valve

Regularly check and clean the filter screen of the water inlet filter of the equipment. When the water volume is insufficient, check whether there are any impurities in the water inlet filter valve. Avoid insufficient pressure or damage to the pump head caused by blockage of the water inlet filter screen. In areas with poor water quality, the filter screen of the filter valve needs to be cleaned frequently.



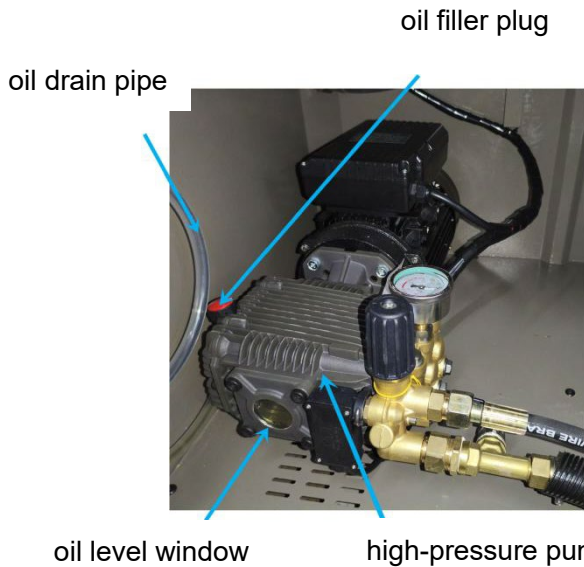
filter valve



filter screen

3. Maintenance and servicing of high-pressure pump

3.1 Replacement of high-pressure pump oil



oil drain plug



After a new machine has been in use for 50 hours, the high-pressure pump must be cleaned. The specific method is as follows:

3.1.1 Pull the oil drain pipe out of the case and try to make the oil drain pipe straight and close to the ground. Unscrew the oil drain plug and drain the old engine oil.

3.1.2 Reinstall the oil drain plug, unscrew the oil filler plug, and add clean kerosene to the high-pressure oil pump. The amount of oil should be slightly above the red mark on the oil sight glass.

3.1.3 Let the pump run without load for 10 to 15 seconds. After turning off the machine, completely drain the kerosene.

3.1.4 Re-add new four-stroke motorcycle engine oil of grade SAE 15W-40 or an equivalent grade. At the same time, pay attention to observing the oil level window. When the oil level reaches the red dot position, it is sufficient. Do not add excessive new oil.

At 100 hours of use, replace the high-pressure pump oil in the same way. After that, change the engine oil every 100 hours. This is very important for prolonging the service life.

Usually, frequently observe the high-pressure pump oil level window inside the car washing machine. When it is found that there is too little oil or the oil is dirty, replace the high-pressure pump oil in the same way.

3.2 Replacement of high-pressure pump seals:

Frequently observe the high-pressure pump oil level window at the back of the machine. When it is found that the oil turns white, the seals inside the high-pressure pump need to be replaced, and at the same time, the high-pressure pump oil needs to be replaced.

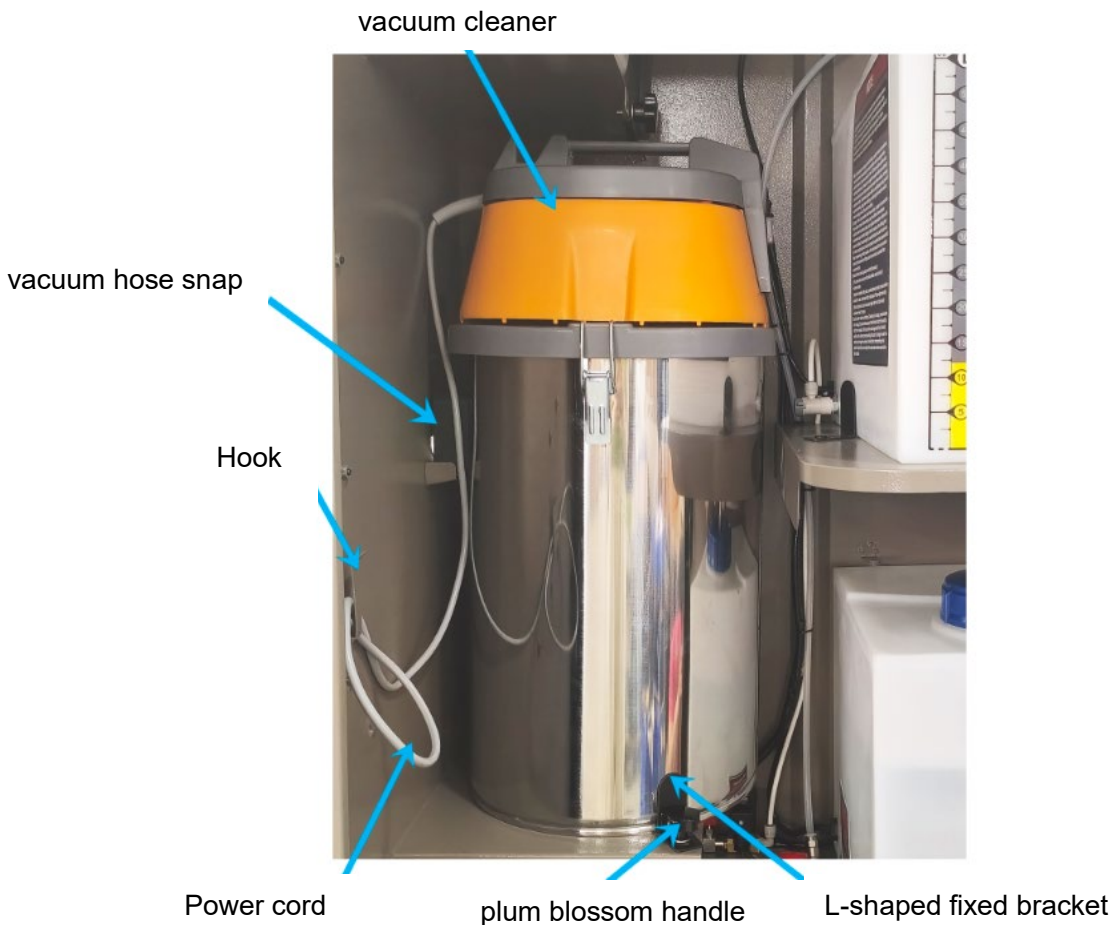


3.2.1 Refer to the steps for replacing high-pressure pump oil. Drain the high-pressure pump oil.

3.2.2 Disassemble the high-pressure pump. Replace the seals with new ones.

3.2.3 Install the high-pressure pump properly. And replace with new high-pressure pump oil.

4. Dust removal of vacuum cleaner

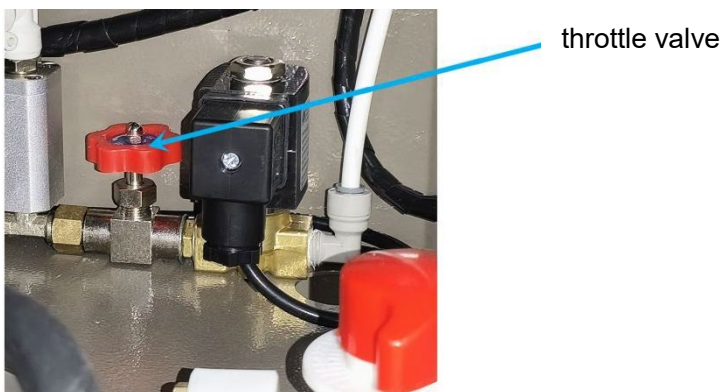


When the dust collection bucket of the vacuum cleaner needs to be cleaned, refer to the following steps:

- 4.1 Unscrew the screws of the positioning plate of the suction pipe from the left side of the machine, and slide the positioning plate upward.
- 4.2 Press the snap of the vacuum hose and pull out the vacuum hose.
- 4.3 Unscrew the plum blossom handle and remove the L-shaped fixed bracket.
- 4.4 Remove the power cord from the hook.
- 4.5 Hold with the left hand and pull out the vacuum cleaner from the machine with the right hand.
- 4.6 Open the dust bucket snaps on both sides.
- 4.7 Open the lid, take out the filter screen, and clean the dust bucket.
- 4.8 After cleaning, install the vacuum cleaner back into the machine, fix the plum blossom handle, and insert the vacuum hose back.



5. Cleaning of foam liquid throttle valve.



If there is very little or almost no foam liquid, check the foam liquid throttle valve. There may be crystallization of the original liquid in the throttle valve.

First, turn the valve clockwise to close it tightly and crush the caked residues through the internal valve. Then turn the throttle valve counterclockwise to loosen and open it. Turn on the foam spraying to let the caked residues be sprayed out through the foam liquid. Repeat the above steps 3 to 4 times to clean the throttle valve. After cleaning, the foam liquid throttle valve needs to be readjusted (approximately tightening and then rotating counterclockwise by 30 degrees to achieve the effect) to make the foaming effect of the foam liquid reach the best state. (It is recommended to clean it once every two months).

6. Cleaning of water gun nozzle.

If the water source is normal but the high-pressure water gun have no water. First, check whether the nozzle is blocked or not and clean the nozzle.



Water gun



Nozzle

7.Cleaning of coating gun.



Coating gun



sealing ring

If the coating gun does not discharge liquid or leaks liquid. Clean the nozzle or replace the sealing ring.

8.Maintenance of air compressor



air compressor

drain plug



air filter

safety valve

8.1 Please keep the machine clean. Regularly wipe and maintain the machine to prevent the air compressor from being soaked by water.

8.2 When the air compressor is in normal use, at least once a week, unscrew the drain plug to discharge the sewage in the air storage tank. When discharging sewage, the pressure in the air storage tank should be lower than 0.1 MPa.

8.3 Frequently check whether the safety valve is sensitive. The safety valve can exhaust air easily. Pressing the valve stem can reset it immediately.

8.4 For every 500 hours of use, remove and clean or replace the filter element of the air filter.

8.5 Inspect the internal and external surfaces once a year. Conduct a pressure resistance test once every two years. In case of severe rust, severe bumping or failure of the pressure resistance test, it should be scrapped.

8.6 When the air compressor is not in use for a long time. It is necessary to unscrew the drain plug of the air compressor. Empty the residual water in the air storage tank.